

---

# Midget Mustang Parts

---

## Part # 100.001

**Unit Price** \$515.00

**Description** Continental Conical Engine Mount (powder coat whi

**Thickness**

**Material** 4130

**Kit**

**Assembly**

## Part # 100.002

**Unit Price** \$600.00

**Description** Lycoming Conical Engine Mount (powder coat white

**Thickness**

**Material** 4130

**Kit**

**Assembly**

## Part # 100.003

**Unit Price** \$685.00

**Description** Lycoming Dynafocal Type 1 Engine Mount (powder

**Thickness**

**Material** 4130

**Kit**

**Assembly**

## Part # 100.100

**Unit Price** \$185.00

**Description** Midget Mustang Drawing Set and Manual

**Thickness**

**Material**

**Kit**

**Assembly**

## Part # 100.101

**Unit Price** \$115.00

**Description** Rivet Kit

**Thickness**

**Material**

**Kit**

**Assembly**

## Part # 100.102

**Unit Price** \$55.00

**Description** Midget Mustang Ref Dwg Set (11"x17")

**Thickness**

**Material**

**Kit**

**Assembly**

## Part # 100.103

**Unit Price** \$45.00

**Description** Midget Mustang Builders Reference DVD or Flash D

**Thickness**

**Material**

**Kit**

**Assembly**

## Part # 100.110

**Unit Price** \$28.00

**Description** Midget Mustang Construction Manual

**Thickness**

**Material**

**Kit**

**Assembly**

**Part # 100.111**

**Unit Price** \$7.00

**Description** Midget Mustang Replacement Dwg Sheet (s&h \$7.5

**Thickness**

**Material**

**Kit**

**Assembly**

**Part # 100.112**

**Unit Price** \$10.00

**Description** M-I Oversize Dwg Sheet ( #3,10, or 34) (s&h \$7.50)

**Thickness**

**Material**

**Kit**

**Assembly**

**Part # 120.0001**

**Unit Price** \$4.50

**Description** 35/64" Wing Fitting Assembly Pins

**Thickness**

**Material**

**Kit** Fuselage

**Assembly**



**Part # 120.0002**

**Unit Price** \$23.00

**Description** NAS6609-21 Wing Attach Bolts

**Thickness**

**Material**

**Kit** Fuselage

**Assembly**



**Part # 120.0003**

**Unit Price** \$33.00

**Description** NAS6609-21X .015" oversize bolts

**Thickness**

**Material**

**Kit**

**Assembly**

**Part # 120.0004**

**Unit Price** \$33.00

**Description** NAS6609-21X .030" oversize bolts

**Thickness**

**Material**

**Kit**

**Assembly**

**Part # 120.102**

**Unit Price** \$1,145.00

**Description** Assembly Bulkhead Station 73.75

**Thickness**

**Material** 2024

**Kit** Fuselage

**Assembly** 73.75 Bulkh



**Part # 120.201**

**Unit Price** \$4.00

**Description** Station 73.75 Spacers 0.75 x 0.375 @ 10" (control sti

**Thickness**

**Material** 6061

**Kit** Fuselage

**Assembly**

**Part # 120.301**

**Unit Price** \$95.00

**Description** Main Spar Carry Through Angle Set (1.5" x 2", 4/set

**Thickness** 0.375

**Material** 6061

**Kit**

**Assembly** 73.75 Bulkh

**Part # 120.303**

**Unit Price** \$95.00

**Description** Bulkhead sta 73.75

**Thickness** 0.040

**Material** 2024

**Kit**

**Assembly** 73.75 Bulkh

**Part # 120.304**

**Unit Price** \$38.00

**Description** Wing Attach Fittings

**Thickness** 0.190

**Material** 4130

**Kit**

**Assembly** 73.75 Bulkh

**Part # 120.310**

**Unit Price** \$8.00

**Description** Doubler sta 73.75 bulk aft side

**Thickness** 0.063

**Material** 2024

**Kit**

**Assembly** 73.75 Bulkh

**Part # 120.311**

**Unit Price** \$8.00

**Description** Doubler sta 73.75 bulk fwd side

**Thickness** 0.063

**Material** 2024

**Kit**

**Assembly** 73.75 Bulkh

**Part # 120.341**

**Unit Price** \$52.00

**Description** Fuselage Center Skin

**Thickness** 0.032

**Material** 2024

**Kit** Fuselage

**Assembly**

**Part # 120.342**

**Unit Price** \$35.00

**Description** Fuselage Forward Side Skin (left and right)

**Thickness** 0.032

**Material** 2024

**Kit** Fuselage

**Assembly**

**Part # 120.343**

**Unit Price** \$38.00

**Description** Fuselage Forward Top Skin

**Thickness** 0.032

**Material** 2024

**Kit** Fuselage

**Assembly**

**Part # 130.000**

**Unit Price** \$285.00

**Description** Wing Hardware Kit

**Thickness**

**Material**

**Kit** Wing

**Assembly**



**Part # 130.0002**

**Unit Price** \$8.40

**Description** Spar Filler 1 x 0.187 @ 48" (butt angle filler)

**Thickness** 0.187

**Material** 6061

**Kit** Fuselage

**Assembly** Main Wing

**Part # 130.0003**

**Unit Price** \$9.00

**Description** Spar Filler 0.5 x 0.125

**Thickness** 0.125

**Material** 6061

**Kit** Wing

**Assembly** Wing

**Part # 130.0004**

**Unit Price** \$595.00

**Description** Wing Rib Set (\$22-\$28ea)

**Thickness**

**Material** 2024

**Kit** Wing

**Assembly** Wing



**Part # 130.0006**

**Unit Price** \$17.20

**Description** Piano Hinge, Aileron (46.5" each)

**Thickness**



**Material**

**Kit** Wing

**Assembly** Aileron

**Part # 130.104**

**Unit Price** \$54.00

**Description** Aileron Counterweights L & R (230.104)

**Thickness**



**Material** 4130

**Kit** Wing

**Assembly** Aileron

**Part # 130.106**

**Unit Price** \$22.50

**Description** Aileron Control Sockets L & R (230.106)

**Thickness**



**Material** 4130

**Kit** Wing

**Assembly** Aileron

**Part # 130.301**

**Unit Price** \$70.00

**Description** Main Wing Spars

**Thickness** 0.040

**Material** 2024

**Kit** Fuselage

**Assembly** Main Wing

**Part # 130.3019**

**Unit Price** \$35.00

**Description** Cut Lightning Holes in Main Wing Spars

**Thickness**

**Material**

**Kit**

**Assembly**

**Part # 130.302**

**Unit Price** \$365.00

**Description** Cap Strips Main Wing Spars

**Thickness** 0.125

**Material** 2024

**Kit** Fuselage

**Assembly** Main Wing

**Part # 130.311**

**Unit Price** \$2.50

**Description** Doublers, gear attachment (220.311)

**Thickness** 0.050

**Material** 4130

**Kit** Fuselage

**Assembly** Main Wing

**Part # 130.313**

**Unit Price** \$7.80

**Description** Spar Angle 1 x 1 x 0.125 @ 32" (butt angles)

**Thickness** 0.125

**Material** 6061

**Kit** Fuselage

**Assembly** Main Wing

**Part # 130.314**

**Unit Price** \$55.00

**Description** Wing Rear Spars L & R

**Thickness** 0.040

**Material** 2024

**Kit** Wing

**Assembly** Wing Rear

**Part # 130.316**

**Unit Price** \$18.60

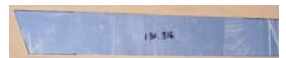
**Description** Wing Rear Spar Reinforcements L & R

**Thickness** 0.063

**Material** 2024

**Kit** Wing

**Assembly** Wing Rear



**Part # 130.317**

**Unit Price** \$28.00

**Description** Wing Rear Spar Attach Fittings L & R

**Thickness** 0.125

**Material** 2024

**Kit** Wing

**Assembly** Wing Rear



**Part # 130.321**

**Unit Price** \$8.40

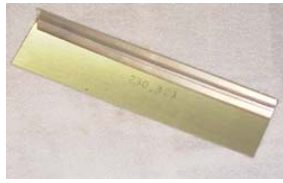
**Description** Wing Rear Spar Doubler (230.321, 230.321-1)

**Thickness** 0.050

**Material** 2024

**Kit** Wing

**Assembly** Wing Rear



**Part # 130.323**

**Unit Price** \$2.50

**Description** Clip - Tip Rib To Wing Main Spar

**Thickness** 0.032

**Material** 2024

**Kit** Wing

**Assembly** Wing

**Part # 130.324**

**Unit Price** \$2.00

**Description** Clip - Tip Rib To Wing Rear Spar

**Thickness** 0.032

**Material** 2024

**Kit** Wing

**Assembly** Wing

**Part # 130.329**

**Unit Price** \$11.20

**Description** Aileron Hinge Reinforcement L & R (230.329)

**Thickness** 0.032

**Material** 2024

**Kit** Wing

**Assembly** Aileron



**Part # 130.332**

**Unit Price** \$260.00

**Description** Wing Leading Edge Skins L & R (\$495/pr)

**Thickness** 0.032

**Material** 2024

**Kit** Wing

**Assembly** Wing



**Part # 130.333**

**Unit Price** \$92.00

**Description** Main Upper Skin R & L

**Thickness** 0.025

**Material** 2024

**Kit** Wing

**Assembly** Wing

**Part # 130.334**

**Unit Price** \$92.00

**Description** Main Lower Skin R & L

**Thickness** 0.025

**Material** 2024

**Kit** Wing

**Assembly** Wing

**Part # 130.335**

**Unit Price** \$1.90

**Description** Wing Walk Angle 0.75 x 0.75 @ 8"

**Thickness** 0.063

**Material** 6061

**Kit** Wing

**Assembly** Wing

**Part # 130.336**

**Unit Price** \$15.60

**Description** Doubler, Bellcrank Access Opening (230.336)

**Thickness** 0.032

**Material** 2024

**Kit** Wing

**Assembly**

**Part # 130.337**

**Unit Price** \$9.40

**Description** Cover, Bellcrank Access Opening (230.337)

**Thickness** 0.032

**Material** 2024

**Kit** Wing

**Assembly**

**Part # 130.338**

**Unit Price** \$15.00

**Description** Wing Walk Doubler

**Thickness** 0.032

**Material** 2024

**Kit** Wing

**Assembly** Wing



**Part # 130.361**

**Unit Price** \$10.80

**Description** Aileron Bellcrank Mount Angle (230.361, 230.361-1)

**Thickness** 0.050

**Material** 2024

**Kit** Wing

**Assembly** Wing



**Part # 130.362**

**Unit Price** \$10.80

**Description** Aileron Bellcrank Mount Angle (230.362, 230.362-1)

**Thickness** 0.050

**Material** 2024

**Kit** Wing

**Assembly** Wing



**Part # 130.363**

**Unit Price** \$2.00

**Description** Stiffener Channel Aft, Aileron Bellcrank Rib

**Thickness** 0.025

**Material** 2024

**Kit** Wing

**Assembly** Wing

**Part # 130.364**

**Unit Price** \$2.00

**Description** Stiffener Channel Fwd, Aileron Bellcrank Rib

**Thickness** 0.025

**Material** 2024

**Kit** Wing

**Assembly** Wing

**Part # 130.501**

**Unit Price** \$74.00

**Description** Aileron Skins L & R (230.501)

**Thickness** 0.020

**Material** 2024

**Kit** Wing

**Assembly** Aileron

**Part # 130.502**

**Unit Price** \$14.00

**Description** Aileron Spars L & R (230.502)

**Thickness** 0.032

**Material** 2024

**Kit** Wing

**Assembly** Aileron

**Part # 130.503**

**Unit Price** \$11.90

**Description** Outboard Aileron Ribs L & R (230.503)

**Thickness** 0.025

**Material** 2024

**Kit** Wing

**Assembly** Aileron



**Part # 130.504**

**Unit Price** \$9.90

**Description** Inboard Aileron Ribs L & R (230.504)

**Thickness** 0.025

**Material** 2024

**Kit** Wing

**Assembly** Aileron



**Part # 130.505**

**Unit Price** \$1.30

**Description** Aileron Corner Gussets (230.505)

**Thickness** 0.025

**Material** 2024

**Kit** Wing

**Assembly** Aileron



**Part # 130.604**

**Unit Price** \$1.00

**Description** Flap Corner Gussets

**Thickness** 0.025

**Material** 2024

**Kit** Wing

**Assembly** Flap



**Part # 130.513**

**Unit Price** \$2.40

**Description** Stiffener, Aileron Skin (\$35 full set) (230.513)

**Thickness** 0.020

**Material** 2024

**Kit** Wing

**Assembly** Aileron



**Part # 130.605**

**Unit Price** \$56.80

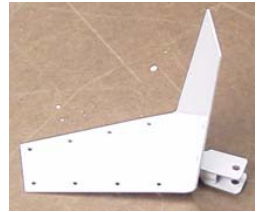
**Description** Flap Spar Control Fittings

**Thickness** 0.050

**Material** 4130

**Kit** Wing

**Assembly** Flap



**Part # 130.600**

**Unit Price** \$13.50

**Description** Piano Hinge, Flap 53"

**Thickness**

**Material**

**Kit** Wing

**Assembly** Flap



**Part # 130.606**

**Unit Price** \$9.90

**Description** Outboard Flap Ribs L & R (230.504)

**Thickness** 0.025

**Material** 2024

**Kit** Wing

**Assembly** Flap



**Part # 130.601**

**Unit Price** \$75.00

**Description** Flap Skins L & R (folded)

**Thickness** 0.020

**Material** 2024

**Kit** Wing

**Assembly** Flap

**Part # 130.607**

**Unit Price** \$9.90

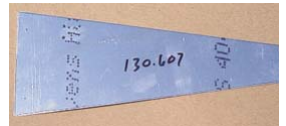
**Description** Inboard Flap Ribs L & R

**Thickness** 0.025

**Material** 2024

**Kit** Wing

**Assembly** Flap



**Part # 130.603**

**Unit Price** \$15.40

**Description** Flap Spars L & R

**Thickness** 0.032

**Material** 2024

**Kit** Wing

**Assembly** Flap



**Part # 130.608**

**Unit Price** \$12.00

**Description** Skin Stiffener Material

**Thickness** 0.025

**Material** 2024

**Kit** Wing

**Assembly** Flap

**Part # 130.616**

**Unit Price** \$13.70

**Description** Flap Hinge Reinforcements L & R

**Thickness** 0.032



**Material** 2024

**Kit** Wing

**Assembly** Flap

**Part # 130.901**

**Unit Price** \$300.00

**Description** Fiberglass Wing Tips - no light pad

**Thickness**

**Material**

**Kit**

**Assembly**

**Part # 130.902**

**Unit Price** \$300.00

**Description** Fiberglass Wing Tips - 2 position light pad

**Thickness**

**Material**

**Kit**

**Assembly**

**Part # 130.903**

**Unit Price** \$300.00

**Description** Fiberglass Wing Tips - 3 position light pad

**Thickness**

**Material**

**Kit**

**Assembly**

**Part # 130.904**

**Unit Price** \$330.00

**Description** Fiberglass Wing Tips - swept tip

**Thickness**

**Material**

**Kit**

**Assembly**

**Part # 130.910**

**Unit Price** \$460.00

**Description** Fiberglass Wing Root Fillets

**Thickness**

**Material**

**Kit**

**Assembly**

**Part # 140.000**

**Unit Price** \$5.00

**Description** Tailcone Hardware Kit

**Thickness**

**Material**

**Kit** Tailcone

**Assembly**

**Part # 140.001**

**Unit Price** \$372.00

**Description** Forward Fuselage Hardware Kit

**Thickness**

**Material**

**Kit** Fuselage

**Assembly** Fuselage

**Part # 140.1001**

**Unit Price** \$36.80

**Description** Trim Tab Cable 10ft

**Thickness**

**Material**

**Kit** Empennage

**Assembly**



**Part # 140.301**

**Unit Price** \$165.00

**Description** Firewall - engine turned finish

**Thickness** 0.018

**Material** s/s

**Kit** Fuselage

**Assembly**





**Part # 140.302**

**Unit Price** \$4.80

**Description** Firewall Attach Plates

**Thickness** 0.063

**Material** 2024

**Kit** Fuselage

**Assembly**



**Part # 140.305**

**Unit Price** \$5.00

**Description** Firewall Angle 1 x 1 x 0.125 @ 32" and 40"

**Thickness** 0.125

**Material** 6061

**Kit** Fuselage

**Assembly**

**Part # 140.306**

**Unit Price** \$15.60

**Description** Wing Rear Spar Carry-through 1 x 1 angle @ 24"

**Thickness** 0.125

**Material** 2024

**Kit** Tailcone

**Assembly**

**Part # 140.307**

**Unit Price** \$6.50

**Description** Wing Rear Spar Carry-through Doubler 1" x 24"

**Thickness** 0.063

**Material** 2024

**Kit** Tailcone

**Assembly**

**Part # 140.309**

**Unit Price** \$4.00

**Description** Filler Strips 1 x 0.063 @ 30" and 36" (or 2x .032)

**Thickness** 0.063

**Material** 2024

**Kit** Fuselage

**Assembly**

**Part # 140.310**

**Unit Price** \$14.00

**Description** Engine Mount Brackets

**Thickness** 0.063

**Material** 4130

**Kit** Fuselage

**Assembly**

**Part # 140.320**

**Unit Price** \$50.00

**Description** Instrument Panel

**Thickness** 0.040

**Material** 2024

**Kit** Fuselage

**Assembly**



**Part # 140.330**

**Unit Price** \$135.00

**Description** Bulkhead Station 99.35

**Thickness** 0.032

**Material** 2024

**Kit** Tailcone

**Assembly**



**Part # 140.331**

**Unit Price** \$95.00

**Description** Bulkhead Station 128.0

**Thickness** 0.032

**Material** 6061

**Kit** Tailcone

**Assembly**

**Part # 140.332**

**Unit Price** \$29.80

**Description** Bulkhead Station 160.0

**Thickness** 0.032

**Material** 2024

**Kit** Tailcone

**Assembly**



**Part # 140.333**

**Unit Price** \$26.40

**Description** Bulkhead Station 177.5

**Thickness** 0.032

**Material** 2024

**Kit** Tailcone

**Assembly**



**Part # 140.334**

**Unit Price** \$24.60

**Description** Bulkhead Station 182.0

**Thickness** 0.032

**Material** 2024

**Kit** Tailcone

**Assembly**



**Part # 140.336**

**Unit Price** \$30.00

**Description** Seat Support Bulkhead Station 83.75

**Thickness** 0.032

**Material** 2024

**Kit** Fuselage

**Assembly**



**Part # 140.348**

**Unit Price** \$20.40

**Description** Bulkhead Doublers Station 99.35 R&L

**Thickness** 0.125

**Material** 2024

**Kit** Tailcone

**Assembly**



**Part # 140.349**

**Unit Price** \$19.50

**Description** Tailwheel Bracket Station 177.5

**Thickness**

**Material** 4130

**Kit** Tailcone

**Assembly**



**Part # 140.350**

**Unit Price** \$4.50

**Description** Bulkhead Doubler Station 177.5

**Thickness** 0.063

**Material** 2024

**Kit** Tailcone

**Assembly**

**Part # 140.351**

**Unit Price** \$31.70

**Description** Tailwheel Bracket Station 182.0

**Thickness**

**Material** 4130

**Kit** Tailcone

**Assembly**



**Part # 140.356**

**Unit Price** \$22.00

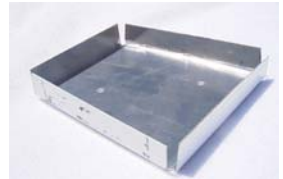
**Description** Transverse Bulkhead

**Thickness** 0.032

**Material** 2024

**Kit** Tailcone

**Assembly**



**Part # 140.359**

**Unit Price** \$9.80

**Description** Doubler, Transverse Tailcone Bulkhead

**Thickness** 0.032

**Material** 2024

**Kit** Tailcone

**Assembly**

**Part # 140.369**

**Unit Price** \$8.60

**Description** Fuselage Stringers 1 x 1 x 0.125 @ 59"

**Thickness** 0.125

**Material** 6061

**Kit** Fuselage

**Assembly**

**Part # 140.370**

**Unit Price** \$21.70

**Description** Forward Fuselage Stringers

**Thickness** 0.040



**Material** 2024

**Kit** Fuselage

**Assembly**

**Part # 140.390**

**Unit Price** \$155.00

**Description** Tailcone Side Skin, left side (flanged)

**Thickness** 0.025

**Material** 2024

**Kit** Tailcone

**Assembly**

**Part # 140.3901**

**Unit Price** \$135.00

**Description** Tailcone Side Skin, right side (no flange)

**Thickness** 0.025

**Material** 2024

**Kit** Tailcone

**Assembly**

**Part # 140.391**

**Unit Price** \$265.00

**Description** Belly Skin (rolled)

**Thickness** 0.025

**Material** 2024

**Kit** Tailcone

**Assembly**



**Part # 140.400**

**Unit Price** \$7.50

**Description** Elevator Bellcrank Skin Support (3/4x3/4 angle @ 3

**Thickness** 0.063

**Material** 6061

**Kit** Fuselage

**Assembly**

**Part # 140.402**

**Unit Price** \$13.80

**Description** Rudder Cable Pully Brackets Station 99.35

**Thickness** 0.050

**Material** 4130

**Kit** Fuselage

**Assembly**



**Part # 140.406**

**Unit Price** \$9.60

**Description** Safety Belt Brackets 2.625 x 0.625 & Bushings

**Thickness** 0.095

**Material** 4130

**Kit** Fuselage

**Assembly**



**Part # 140.407**

**Unit Price** \$38.00

**Description** Fuselage Tunnel, 2 sides + tunnel

**Thickness** 0.040

**Material** 2024

**Kit** Fuselage

**Assembly**



**Part # 140.450**

**Unit Price** \$18.00

**Description** Seat Bottom

**Thickness** 0.032

**Material** 2024

**Kit** Fuselage

**Assembly**



**Part # 140.451**

**Unit Price** \$10.50

**Description** Seat Bottom Support R & L

**Thickness** 0.025

**Material** 2024

**Kit** Fuselage

**Assembly**



**Part # 140.453**

**Unit Price** \$24.80

**Description** Shoulder Harness Bracket (n/a M-IA)

**Thickness** 0.062

**Material** 4130

**Kit** Tailcone

**Assembly**



**Part # 150.0000**

**Unit Price** \$85.00

**Description** Empennage Hardware Kit

**Thickness**

**Material**

**Kit** Empennage

**Assembly**

**Part # 150.0001**

**Unit Price** \$2.40

**Description** Rudder Skin Stiffeners (\$13/full set)

**Thickness** 0.025

**Material** 2024

**Kit** Empennage

**Assembly**



**Part # 150.0002**

**Unit Price** \$2.40

**Description** Elevator Skin Stiffeners (\$23/full set)

**Thickness** 0.025

**Material** 2024

**Kit** Empennage

**Assembly**

**Part # 150.004**

**Unit Price** \$1.75

**Description** Elevator Stops (250.004)

**Thickness** 0.125

**Material** 2024

**Kit** Empennage

**Assembly**



**Part # 150.210**

**Unit Price** \$64.00

**Description** Elevator Control Arms

**Thickness**

**Material** 4130

**Kit** Empennage

**Assembly** Elevator

**Part # 150.211**

**Unit Price** \$58.00

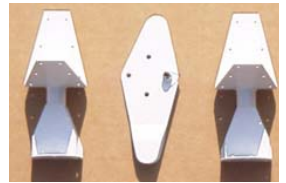
**Description** Elevator Control Horn

**Thickness**

**Material** 4130

**Kit** Empennage

**Assembly**



**Part # 150.212**

**Unit Price** \$78.00

**Description** Rudder Bottom Assembly

**Thickness**

**Material** 4130

**Kit** Empennage

**Assembly** Rudder



**Part # 150.301**

**Unit Price** \$12.00

**Description** Stabilizer Rear Spars

**Thickness** 0.032

**Material** 2024

**Kit** Empennage

**Assembly** Stabilizer



**Part # 150.302**

**Unit Price** \$14.30

**Description** Stabilizer Rear Spar Reinforcements (250.302)

**Thickness** 0.125

**Material** 2024

**Kit** Empennage

**Assembly** Stabilizer



**Part # 150.303**

**Unit Price** \$12.00

**Description** Stabilizer Front Spars

**Thickness** 0.032



**Material** 2024

**Kit** Empennage

**Assembly**

**Part # 150.304**

**Unit Price** \$21.50

**Description** Stabilizer Root Ribs (250.304)

**Thickness** 0.025



**Material** 2024

**Kit** Empennage

**Assembly**

**Part # 150.305**

**Unit Price** \$19.70

**Description** Stabilizer Tip Ribs (250.305)

**Thickness** 0.025



**Material** 2024

**Kit** Empennage

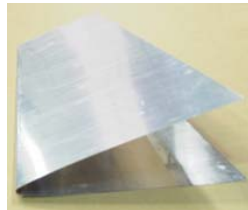
**Assembly**

**Part # 150.306**

**Unit Price** \$70.00

**Description** Stabilizer Skins

**Thickness** 0.032



**Material** 2024

**Kit** Empennage

**Assembly**

**Part # 150.307**

**Unit Price** \$19.80

**Description** Fin Leading Edge Bracket (250.307)

**Thickness** 0.062



**Material** 4130

**Kit** Empennage

**Assembly**

**Part # 150.3071**

**Unit Price** \$19.80

**Description** Stabilizer Leading Edge Brackets (250.307-1)

**Thickness** 0.062



**Material** 4130

**Kit** Empennage

**Assembly**

**Part # 150.308**

**Unit Price** \$14.50

**Description** Outboard Stabilizer Hinge Parts (250.308) (2pcs/set)

**Thickness** 0.062



**Material** 4130

**Kit** Empennage

**Assembly** Stabilizer

**Part # 150.309**

**Unit Price** \$19.00

**Description** Center Stabilizer Hinge (250.309)

**Thickness** 0.062



**Material** 4130

**Kit** Empennage

**Assembly** Stabilizer

**Part # 150.315**

**Unit Price** \$12.40

**Description** Elevator Spars

**Thickness** 0.032



**Material** 2024

**Kit** Empennage

**Assembly** Elevator

**Part # 150.316**

**Unit Price** \$53.00

**Description** Elevator Skins

**Thickness** 0.020



**Material** 2024

**Kit** Empennage

**Assembly**

**Part # 150.317**

**Unit Price** \$13.90

**Description** Elevator Root Rib (250.317)

**Thickness** 0.025

**Material** 2024

**Kit** Empennage

**Assembly**



**Part # 150.318**

**Unit Price** \$9.50

**Description** Elevator Root Rib, trim tab side (250.318)

**Thickness** 0.025

**Material** 2024

**Kit** Empennage

**Assembly**

**Part # 150.319**

**Unit Price** \$7.75

**Description** Trim Tab Auxillary Spar

**Thickness** 0.025

**Material** 2024

**Kit** Empennage

**Assembly**



**Part # 150.320**

**Unit Price** \$9.85

**Description** Elevator Tip Ribs (250.320)

**Thickness** 0.025

**Material** 2024

**Kit** Empennage

**Assembly**



**Part # 150.321**

**Unit Price** \$19.80

**Description** Outboard Elevator & Upper Rudder Hinges (rod end)

**Thickness**

**Material**

**Kit** Empennage

**Assembly** Elevator

**Part # 150.3211**

**Unit Price** \$32.40

**Description** outboard elev/rudder hinge OLD STYLE

**Thickness**

**Material** 4130

**Kit**

**Assembly**

**Part # 150.323**

**Unit Price** \$4.00

**Description** Elev. Cntrl Horn and Rud. Bottom Bushing

**Thickness**

**Material** 4130

**Kit** Empennage

**Assembly**

**Part # 150.329**

**Unit Price** \$4.50

**Description** Outboard Elevator/Rudder Hinge Brkt Doubler

**Thickness** 0.063

**Material** 2024

**Kit** Empennage

**Assembly** Elevator

**Part # 150.330**

**Unit Price** \$70.00

**Description** Fin Skin

**Thickness** 0.032

**Material** 2024

**Kit** Empennage

**Assembly**



**Part # 150.331**

**Unit Price** \$26.50

**Description** Fin Rear Spar

**Thickness** 0.032

**Material** 2024

**Kit** Empennage

**Assembly** Fin



**Part # 150.332**

**Unit Price** \$28.60

**Description** Fin Rear Spar Reinforcement

**Thickness** 0.125



**Material** 2024

**Kit** Empennage

**Assembly** Fin

**Part # 150.333**

**Unit Price** \$10.00

**Description** Fin Front Spar

**Thickness** 0.032



**Material** 2024

**Kit** Empennage

**Assembly**

**Part # 150.334**

**Unit Price** \$20.80

**Description** Fin Root Rib (250.334)

**Thickness** 0.024



**Material** 2024

**Kit** Empennage

**Assembly**

**Part # 150.335**

**Unit Price** \$19.70

**Description** Fin Tip Rib (250.305)

**Thickness** 0.024



**Material** 2024

**Kit** Empennage

**Assembly**

**Part # 150.337**

**Unit Price** \$5.00

**Description** Hinge Attach Doublers, Vert Fin & Horiz Stab

**Thickness** 0.032



**Material** 2024

**Kit** Empennage

**Assembly** Stabilizer

**Part # 150.338**

**Unit Price** \$14.50

**Description** Upper Fin Hinge Parts (250.308) (2pcs/set)

**Thickness** 0.062

**Material** 4130

**Kit** Empennage

**Assembly** Fin



**Part # 150.339**

**Unit Price** \$19.00

**Description** Lower Fin Hinge (250.309)

**Thickness** 0.062

**Material** 4130

**Kit** Empennage

**Assembly** Fin



**Part # 150.340**

**Unit Price** \$53.00

**Description** Rudder Skin

**Thickness** 0.020

**Material** 2024

**Kit** Empennage

**Assembly**



**Part # 150.341**

**Unit Price** \$11.80

**Description** Rudder Spar

**Thickness** 0.032

**Material** 2024

**Kit** Empennage

**Assembly** Rudder



**Part # 150.342**

**Unit Price** \$9.60

**Description** Rudder Bottom Rib

**Thickness** 0.025

**Material** 2024

**Kit** Empennage

**Assembly**



**Part # 150.343**

**Unit Price** \$9.40

**Description** Rudder Tip Rib (250.343)

**Thickness** 0.025

**Material** 2024

**Kit** Empennage

**Assembly**



**Part # 150.348**

**Unit Price** \$6.20

**Description** Rudder Stop

**Thickness** 0.090

**Material** 4130

**Kit** Empennage

**Assembly**



**Part # 150.349**

**Unit Price** \$19.40

**Description** Tailwheel Steering Bracket (250.349)

**Thickness** 0.062

**Material** 4130

**Kit** Empennage

**Assembly**



**Part # 150.354**

**Unit Price** \$4.60

**Description** Rudder Corner Reinforcement (250.354)

**Thickness** 0.040

**Material** 2024

**Kit** empennage

**Assembly**



**Part # 150.355**

**Unit Price** \$14.40

**Description** Fin Rear Spar Bottom Flange Doubler

**Thickness** 0.032

**Material** 2024

**Kit** Empennage

**Assembly** Fin



**Part # 150.360**

**Unit Price** \$4.00

**Description** Fin / Stab Tip Fastening Strip 1.125" x 27"

**Thickness** 0.032

**Material** 2024

**Kit** Empennage

**Assembly**



**Part # 150.380**

**Unit Price** \$41.00

**Description** Trim Tab Skin

**Thickness** 0.020

**Material** 2024

**Kit** Empennage

**Assembly**



**Part # 150.381**

**Unit Price** \$2.80

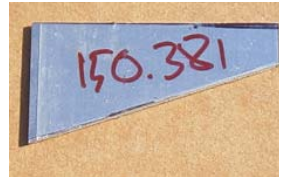
**Description** Trim Tab Arm

**Thickness** 0.062

**Material** 2024

**Kit** Empennage

**Assembly**



**Part # 150.384**

**Unit Price** \$4.60

**Description** Trim Tab Piano Hinge 13"

**Thickness**

**Material**

**Kit** Empennage

**Assembly**



**Part # 150.900**

**Unit Price** \$300.00

**Description** Fiberglass Tailgroup Tips (7pcs)

**Thickness**

**Material**

**Kit**

**Assembly**



**Part # 150.910**

**Unit Price** \$115.00

**Description** Fiberglass Rudder Bottom

**Thickness**

**Material**

**Kit**

**Assembly**

**Part # 150.911**

**Unit Price** \$31.50

**Description** Fiberglass Rudder Tip

**Thickness**

**Material**

**Kit**

**Assembly**

**Part # 150.912**

**Unit Price** \$31.50

**Description** Fiberglass Fin Tip

**Thickness**

**Material**

**Kit**

**Assembly**

**Part # 150.913**

**Unit Price** \$31.50

**Description** Fiberglass Horiz Stab Tip

**Thickness**

**Material**

**Kit**

**Assembly**

**Part # 150.914**

**Unit Price** \$31.50

**Description** Fiberglass Elevator Tip

**Thickness**

**Material**

**Kit**

**Assembly**

**Part # 160.1011**

**Unit Price** \$125.00

**Description** Control Stick Support Assembly

**Thickness**

**Material** 4130

**Kit** Fuselage

**Assembly** Control Stic

**Part # 160.1012**

**Unit Price** \$32.50

**Description** Control Stick

**Thickness**

**Material** 4130

**Kit** Fuselage

**Assembly** Control Stic

**Part # 160.1013**

**Unit Price** \$26.60

**Description** Control Stick Assembly Pivot Mounting Brackets

**Thickness**

**Material** 4130

**Kit** Fuselage

**Assembly** Control Stic

**Part # 160.1014**

**Unit Price** \$24.00

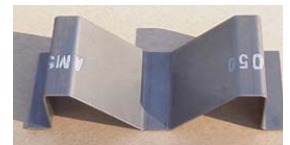
**Description** Control Stick Assembly Mount Brkt

**Thickness** 0.050

**Material** 4130

**Kit** Fuselage

**Assembly** Control Stic



**Part # 160.1051**

**Unit Price** \$32.00

**Description** Axle Shaft 0.75 x 0.049

**Thickness**

**Material**

**Kit** Fuselage

**Assembly** Rudder Peda

**Part # 160.1052**

**Unit Price** \$68.00

**Description** Rudder Pedal Arm Assemblies

**Thickness**

**Material**

**Kit** Fuselage

**Assembly** Rudder Peda

**Part # 160.1053**

**Unit Price** \$37.00

**Description** Rudder Pedals (2-3/4")

**Thickness**

**Material**

**Kit** Fuselage

**Assembly** Rudder Peda



**Part # 160.1054**

**Unit Price** \$4.75

**Description** Aluminum Axle Rods 0.25" OD 2@3.5" & 2@3.875

**Thickness**

**Material**

**Kit** Fuselage

**Assembly** Rudder Peda

**Part # 160.1055**

**Unit Price** \$15.00

**Description** Rudder Pedal Bearing Blocks (pair)

**Thickness**

**Material**

**Kit** Fuselage

**Assembly** Rudder Peda

**Part # 160.1056**

**Unit Price** \$9.00

**Description** Aluminum Channel 1 x 1 (brake cylinder attach)

**Thickness**

**Material**

**Kit** Fuselage

**Assembly** Rudder Peda

**Part # 160.111**

**Unit Price** \$56.00

**Description** Flap Handle and Pivot Tube

**Thickness**

**Material** 4130

**Kit** Fuselage

**Assembly** Flap Control



**Part # 160.113**

**Unit Price** \$48.00

**Description** Flap Push Rods w/ 2 AN490HT8P

**Thickness**

**Material** 4130

**Kit** Fuselage

**Assembly** Flap Control



**Part # 160.120**

**Unit Price** \$132.00

**Description** Aileron Bellerank Kit (sides, spacers, bearings, bushi

**Thickness**

**Material**

**Kit** Wing

**Assembly** Aileron



**Part # 160.121**

**Unit Price** \$65.00

**Description** Elevator Bellerank Kit (sides, spacers, bearings)

**Thickness**

**Material**

**Kit** Fuselage

**Assembly**

**Part # 160.133**

**Unit Price** \$68.00

**Description** Aileron Pushrods (stick to bellcrank) 0.625x.035x75

**Thickness** 0.035

**Material** 4130

**Kit** Wing

**Assembly** Aileron

**Part # 160.404**

**Unit Price** \$21.00

**Description** Flap Control Quadrant

**Thickness** 0.090

**Material** 4130

**Kit** Fuselage

**Assembly** Flap Control



**Part # 160.406**

**Unit Price** \$22.60

**Description** Pivot Tube Mounting Brackets

**Thickness**

**Material** 4130

**Kit** Fuselage

**Assembly** Flap Control

**Part # 160.407**

**Unit Price** \$27.70

**Description** Pivot Tube Actuating Arms

**Thickness**

**Material** 4130

**Kit** Fuselage

**Assembly** Flap Control

**Part # 160.408**

**Unit Price** \$25.50

**Description** Flap Handle Actuator Tube & Spring

**Thickness**

**Material**

**Kit** Fuselage

**Assembly** Flap Control



**Part # 160.512**

**Unit Price** \$47.00

**Description** Elevator Pushrod 1.5" x 0.49 tube @ 77"

**Thickness** 0.049

**Material** 6061

**Kit** Fuselage

**Assembly**

**Part # 160.514**

**Unit Price** \$26.80

**Description** Elevator Pushrod Inserts 1.5" (M2 260.514)

**Thickness**

**Material** 2024

**Kit** Fuselage

**Assembly**



**Part # 160.521**

**Unit Price** \$58.50

**Description** Elevator Pushrod (stick to belerck) 5/8" ODx 32.437"

**Thickness** 0.035

**Material** 4130

**Kit** Fuselage

**Assembly**

**Part # 160.528**

**Unit Price** \$4.50

**Description** Aileron Pushrods (bellcrank to aileron) 1/2x.035x13

**Thickness**

**Material** 6061

**Kit** Wing

**Assembly** Aileron



**Part # 160.530**

**Unit Price** \$0.50

**Description** MS20470AD4-30 Rivets (for securing pushrod tube i

**Thickness**

**Material**

**Kit** Fuselage

**Assembly**

**Part # 160.660**

**Unit Price** \$45.60

**Description** Turnbuckles, Rudder Cable

**Thickness**

**Material**

**Kit** Fuselage

**Assembly** Rudder Peda



**Part # 160.661**

**Unit Price** \$37.00

**Description** Rudder Control Cables (260.661)

**Thickness**

**Material**

**Kit** Fuselage

**Assembly** Rudder Peda



**Part # 160.662**

**Unit Price** \$24.80

**Description** Turnbuckles, Fuel Tank Mount (long 8")

**Thickness**

**Material**

**Kit** Fuselage

**Assembly** Fuel Tank



**Part # 170.1002**

**Unit Price** \$310.00

**Description** 4" Tailwheel Assembly

**Thickness**

**Material**

**Kit** Tailcone

**Assembly**

**Part # 170.300**

**Unit Price** \$850.00

**Description** M1 Gear Legs

**Thickness**

**Material** 7075

**Kit** Gear

**Assembly**

**Part # 170.301**

**Unit Price** \$24.50

**Description** Mounting Plate, Gear Leg

**Thickness** 0.190

**Material** 4130

**Kit**

**Assembly** Torque Tub



**Part # 170.302**

**Unit Price** \$10.80

**Description** Mounting Plate Bracket

**Thickness** 0.125

**Material** 4130

**Kit**

**Assembly** Torque Tub



**Part # 170.303**

**Unit Price** \$9.40

**Description** Mounting Plate Gusset

**Thickness** 0.125

**Material** 4130

**Kit**

**Assembly** Torque Tub



**Part # 170.305**

**Unit Price** \$17.60

**Description** Torque Tube 1.5"OD x 21.375"

**Thickness** 0.058

**Material** 4130

**Kit**

**Assembly** Torque Tub

**Part # 170.306**

**Unit Price** \$22.60

**Description** Torque Tube 1.375"OD x 33.25"

**Thickness** 0.058

**Material** 4130

**Kit**

**Assembly** Torque Tub

**Part # 170.307**

**Unit Price** \$38.50

**Description** Main Spar Gear Mounting Bracket

**Thickness**

**Material** 4130

**Kit** Wing

**Assembly** Torque Tub



**Part # 170.308**

**Unit Price** \$28.00

**Description** Gear Rear Spar Sockets

**Thickness**

**Material** 4130

**Kit** Gear

**Assembly**

**Part # 170.310**

**Unit Price** \$3.80

**Description** Bushings 1/2" OD x 0.437"

**Thickness** 0.065

**Material** 4130

**Kit**

**Assembly** Torque Tub



**Part # 170.314**

**Unit Price** \$4.80

**Description** Gear Bracket Spacers (under bolt head, revised 2015)

**Thickness** 0.190

**Material** 4130

**Kit**

**Assembly** Torque Tub

**Part # 170.316**

**Unit Price** \$21.75

**Description** Torque Tube 1.625"OD x 15.375"

**Thickness** 0.058

**Material** 4130

**Kit**

**Assembly** Torque Tub

**Part # 170.350**

**Unit Price** \$375.00

**Description** Torque Tube Assemblies (parts)

**Thickness**

**Material** 4130

**Kit** Gear

**Assembly**

**Part # 170.375**

**Unit Price** \$145.00

**Description** Tailwheel Spring

**Thickness**

**Material** 4130

**Kit** Tailcone

**Assembly**

**Part # 170.378**

**Unit Price** \$54.00

**Description** Tailwheel Spring Mount Tube Assembly

**Thickness**

**Material** 4130

**Kit** Tailcone

**Assembly**

**Part # 180.304**

**Unit Price** \$195.00

**Description** Fiberglass Seatback

**Thickness**

**Material**

**Kit**

**Assembly**



**Part # 190.102**

**Unit Price** \$795.00

**Description** Fuel Tank, 15gal Header

**Thickness**

**Material** 5052

**Kit**

**Assembly**

**Part # 190.200**

**Unit Price** \$485.00

**Description** canopy, standard flip over (canopy only)

**Thickness**

**Material**

**Kit** Canopy 1

**Assembly**

**Part # 190.221**

**Unit Price** \$34.00

**Description** canopy fairing material

**Thickness** .025

**Material** 2024

**Kit** Canopy 1

**Assembly**

**Part # 190.222**

**Unit Price** \$11.50

**Description** canopy frame tubing 3/8"OD, 28" long

**Thickness** 0.035

**Material** 4130

**Kit** Canopy 1

**Assembly**

**Part # 190.223**

**Unit Price** \$14.80

**Description** canopy frame tubing 3/8"OD, 38" long

**Thickness** 0.035

**Material** 4130

**Kit** Canopy 1

**Assembly**

**Part # 190.224**

**Unit Price** \$6.00

**Description** piano hinge 24"

**Thickness**

**Material**

**Kit** Canopy 1

**Assembly**

**Part # 190.225**

**Unit Price** \$4.70

**Description** canopy fairing material aft top 4"x24"

**Thickness** .025

**Material** 2024

**Kit**

**Assembly**

**Part # 190.301**

**Unit Price** \$8.00

**Description** Fuel Tank Mount Angle 1 x 1 x 0.125 @ 45"

**Thickness** 0.125

**Material**

**Kit** Fuselage

**Assembly** Fuel Tank

**Part # 190.303**

**Unit Price** \$6.60

**Description** Fuel Tank Splice Plates

**Thickness** 0.125

**Material** 2024

**Kit** Fuselage

**Assembly** Fuel Tank



**Part # 190.304**

**Unit Price** \$4.80

**Description** Fuel Tank Mounting Bracket

**Thickness** 0.063

**Material** 4130

**Kit** Fuselage

**Assembly** Fuel Tank

**Part # 195.200**

**Unit Price** \$590.00

**Description** canopy, M-IA slider (canopy only)

**Thickness**

**Material**

**Kit** Canopy 2

**Assembly**

**Part # 195.201**

**Unit Price** \$24.00

**Description** Lower Fairing

**Thickness** 0.032

**Material**

**Kit** Canopy 2

**Assembly**

**Part # 195.202**

**Unit Price** \$8.00

**Description** Canoly Seal Strip

**Thickness** 0.025

**Material**

**Kit** Canopy 2

**Assembly**

**Part # 195.203**

**Unit Price** \$14.00

**Description** Windshield Fairing

**Thickness** 0.025

**Material**

**Kit** Canopy 2

**Assembly**

**Part # 195.204**

**Unit Price** \$20.00

**Description** Track Mount Angle

**Thickness** 0.050



**Material**

**Kit** Canopy 2

**Assembly**

**Part # 195.205**

**Unit Price** \$10.20

**Description** Shoulder Harness Doubler

**Thickness** 0.125



**Material**

**Kit** Canopy 2

**Assembly**

**Part # 195.206**

**Unit Price** \$16.00

**Description** Transverse Bulkhead

**Thickness** 0.025

**Material** 2024

**Kit** Canopy 2

**Assembly**

**Part # 195.301**

**Unit Price** \$34.00

**Description** Steel Tube formed canopy bows 1/2"OD, 19" outside

**Thickness** 0.035

**Material** 4130

**Kit** Canopy 2

**Assembly**

**Part # 195.302**

**Unit Price** \$19.50

**Description** Steel Tube side rails 1/2"OD, 43" outside diameter

**Thickness** 0.035

**Material** 4130

**Kit** Canopy 2

**Assembly**

**Part # 195.303**

**Unit Price** \$19.50

**Description** Steel Tube 0.375"OD @ 4ft

**Thickness** 0.035

**Material** 4130

**Kit** Canopy 2

**Assembly**

**Part # 195.304**

**Unit Price** \$65.00

**Description** Roll Bar - formed, 1"OD @ 4ft

**Thickness** 0.035

**Material** 4130

**Kit** Canopy 2

**Assembly**

**Part # 195.305**

**Unit Price** \$7.00

**Description** Steel Sheet

**Thickness** 0.035

**Material** 4130

**Kit** Canopy 2

**Assembly**

**Part #** 195.401

**Unit Price** \$35.80

**Description** hardware kit M-IA

**Thickness**

**Material**

**Kit** Canopy 2

**Assembly**