
Midget Mustang Parts

Updated 11/27/2019

Part # 100.001

Unit Price \$455.00

Description Continental Conical Engine Mount (powder coat whit

Thickness

Material 4130

Kit

Assembly

Part # 100.002

Unit Price \$525.00

Description Lycoming Conical Engine Mount (powder coat white)

Thickness

Material 4130

Kit

Assembly

Part # 100.003

Unit Price \$565.00

Description Lycoming Dynafocal Type I Engine Mount (powder c

Thickness

Material 4130

Kit

Assembly

Part # 100.100

Unit Price \$185.00

Description Midget Mustang Drawing Set and Manual

Thickness

Material

Kit

Assembly

Part # 100.101

Unit Price \$115.00

Description Rivet Kit

Thickness

Material

Kit

Assembly

Part # 100.102

Unit Price \$48.00

Description Midget Mustang Ref Dwg Set (11"x17")

Thickness

Material

Kit

Assembly

Part # 100.103

Unit Price \$45.00

Description Midget Mustang Builders Reference DVD

Thickness

Material

Kit

Assembly

Part # 100.110

Unit Price \$28.00

Description Midget Mustang Construction Manual

Thickness

Material

Kit

Assembly

Part # 100.111

Unit Price \$7.00

Description Midget Mustang Replacement Dwg Sheet (s&h \$7.50)

Thickness

Material

Kit

Assembly

Part # 100.112

Unit Price \$10.00

Description M-I Oversize Dwg Sheet (#3,10, or 34) (s&h \$7.50)

Thickness

Material

Kit

Assembly

Part # 120.0001

Unit Price \$4.50

Description 35/64" Wing Fitting Assembly Pins

Thickness

Material

Kit Fuselage

Assembly



Part # 120.0002

Unit Price \$23.00

Description NAS6609-21 Wing Attach Bolts

Thickness

Material

Kit Fuselage

Assembly



Part # 120.102

Unit Price \$1,094.00

Description Assembly Bulkhead Station 73.75

Thickness

Material 2024

Kit Fuselage

Assembly 73.75 Bulkh



Part # 120.201

Unit Price \$4.00

Description Station 73.75 Spacers 0.75 x 0.375 @ 10" (control sti

Thickness

Material 6061

Kit Fuselage

Assembly

Part # 120.301

Unit Price \$95.00

Description Main Spar Carry Through Angle Set (1.5" x 2", 4/set)

Thickness 0.375

Material 6061

Kit

Assembly 73.75 Bulkh

Part # 120.303

Unit Price \$95.00

Description Bulkhead sta 73.75

Thickness 0.040

Material 2024

Kit

Assembly 73.75 Bulkh

Part # 120.304

Unit Price \$38.00

Description Wing Attach Fittings

Thickness 0.190

Material 4130

Kit

Assembly 73.75 Bulkh

Part # 120.310

Unit Price \$8.00

Description Doubler sta 73.75 bulk aft side

Thickness 0.063

Material 2024

Kit

Assembly 73.75 Bulkh

Part # 120.311

Unit Price \$8.00

Description Doubler sta 73.75 bulk fwd side

Thickness 0.063

Material 2024

Kit

Assembly 73.75 Bulkh

Part # 120.341

Unit Price \$52.00

Description Fuselage Center Skin

Thickness 0.032

Material 2024

Kit Fuselage

Assembly

Part # 120.342

Unit Price \$35.00

Description Fuselage Forward Side Skin (left and right)

Thickness 0.032

Material 2024

Kit Fuselage

Assembly

Part # 120.343

Unit Price \$38.00

Description Fuselage Forward Top Skin

Thickness 0.032

Material 2024

Kit Fuselage

Assembly

Part # 130.000

Unit Price \$285.00

Description Wing Hardware Kit

Thickness

Material

Kit Wing

Assembly Wing



Part # 130.0002

Unit Price \$8.40

Description Spar Filler 1 x 0.187 @ 48" (butt angle filler)

Thickness 0.187

Material 6061

Kit Fuselage

Assembly Main Wing

Part # 130.0003

Unit Price \$9.00

Description Spar Filler 0.5 x 0.125

Thickness 0.125

Material 6061

Kit Wing

Assembly Wing

Part # 130.0004

Unit Price \$595.00

Description Wing Rib Set (\$22-\$28ea)

Thickness

Material 2024

Kit Wing

Assembly Wing



Part # 130.0006

Unit Price \$17.20

Description Piano Hinge, Aileron (46.5" each)

Thickness

Material

Kit Wing

Assembly Aileron



Part # 130.104

Unit Price \$54.00

Description Aileron Counterweights L & R (230.104)

Thickness

Material 4130

Kit Wing

Assembly Aileron



Part # 130.106

Unit Price \$22.50

Description Aileron Control Sockets L & R (230.106)

Thickness

Material 4130

Kit Wing

Assembly Aileron



Part # 130.301

Unit Price \$70.00

Description Main Wing Spars

Thickness 0.040

Material 2024

Kit Fuselage

Assembly Main Wing

Part # 130.3019

Unit Price \$35.00

Description Cut Lightening Holes in Main Wing Spars

Thickness

Material

Kit

Assembly

Part # 130.302

Unit Price \$365.00

Description Cap Strips Main Wing Spars

Thickness 0.125

Material 2024

Kit Fuselage

Assembly Main Wing

Part # 130.311

Unit Price \$2.50

Description Doublers, gear attachment (220.311)

Thickness 0.050

Material 4130

Kit Fuselage

Assembly Main Wing

Part # 130.313

Unit Price \$7.80

Description Spar Angle 1 x 1 x 0.125 @ 32" (butt angles)

Thickness 0.125

Material 6061

Kit Fuselage

Assembly Main Wing

Part # 130.314

Unit Price \$55.00

Description Wing Rear Spars L & R

Thickness 0.040

Material 2024

Kit Wing

Assembly Wing Rear

Part # 130.316

Unit Price \$18.60

Description Wing Rear Spar Reinforcements L & R

Thickness 0.063

Material 2024

Kit Wing

Assembly Wing Rear



Part # 130.317

Unit Price \$28.00

Description Wing Rear Spar Attach Fittings L & R

Thickness 0.125

Material 2024

Kit Wing

Assembly Wing Rear



Part # 130.321

Unit Price \$8.40

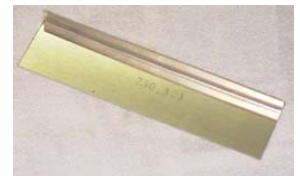
Description Wing Rear Spar Doubler (230.321, 230.321-1)

Thickness 0.050

Material 2024

Kit Wing

Assembly Wing Rear



Part # 130.323

Unit Price \$2.50

Description Clip - Tip Rib To Wing Main Spar

Thickness 0.032

Material 2024

Kit Wing

Assembly

Part # 130.324

Unit Price \$2.00

Description Clip - Tip Rib To Wing Rear Spar

Thickness 0.032

Material 2024

Kit Wing

Assembly Wing

Part # 130.329

Unit Price \$11.20

Description Aileron Hinge Reinforcement L & R (230.329)

Thickness 0.032



Material 2024

Kit Wing

Assembly Aileron

Part # 130.332

Unit Price \$260.00

Description Wing Leading Edge Skins L & R (\$495/pr)

Thickness 0.032



Material 2024

Kit Wing

Assembly Wing

Part # 130.333

Unit Price \$92.00

Description Main Upper Skin R & L

Thickness 0.025

Material 2024

Kit Wing

Assembly Wing

Part # 130.334

Unit Price \$92.00

Description Main Lower Skin R & L

Thickness 0.025

Material 2024

Kit Wing

Assembly Wing

Part # 130.335

Unit Price \$1.90

Description Wing Walk Angle 0.75 x 0.75 @ 8"

Thickness 0.063

Material 6061

Kit Wing

Assembly Wing

Part # 130.336

Unit Price \$15.60

Description Doubler, Bellcrank Access Opening (230.336)

Thickness 0.032

Material 2024

Kit Wing

Assembly

Part # 130.337

Unit Price \$9.40

Description Cover, Bellcrank Access Opening (230.337)

Thickness 0.032

Material 2024

Kit Wing

Assembly

Part # 130.338

Unit Price \$15.00

Description Wing Walk Doubler

Thickness 0.032

Material 2024

Kit Wing

Assembly Wing



Part # 130.361

Unit Price \$10.80

Description Aileron Bellcrank Mount Angle (230.361, 230.361-1)

Thickness 0.050



Material 2024

Kit Wing

Assembly Wing

Part # 130.362

Unit Price \$10.80

Description Aileron Bellcrank Mount Angle (230.362, 230.362-1)

Thickness 0.050



Material 2024

Kit Wing

Assembly Wing

Part # 130.363

Unit Price \$2.00

Description Stiffener Channel Aft, Aileron Bellcrank Rib

Thickness 0.025

Material 2024

Kit Wing

Assembly Wing

Part # 130.364

Unit Price \$2.00

Description Stiffener Channel Fwd, Aileron Bellcrank Rib

Thickness 0.025

Material 2024

Kit Wing

Assembly Wing

Part # 130.501

Unit Price \$74.00

Description Aileron Skins L & R (230.501)

Thickness 0.020

Material 2024

Kit Wing

Assembly Aileron

Part # 130.502

Unit Price \$12.00

Description Aileron Spars L & R (230.502)

Thickness 0.032

Material 2024

Kit Wing

Assembly Aileron

Part # 130.503

Unit Price \$11.90

Description Outboard Aileron Ribs L & R (230.503)

Thickness 0.025

Material 2024

Kit Wing

Assembly Aileron



Part # 130.504

Unit Price \$9.90

Description Inboard Aileron Ribs L & R (230.504)

Thickness 0.025

Material 2024

Kit Wing

Assembly Aileron



Part # 130.505

Unit Price \$1.30

Description Aileron Corner Gussets (230.505)

Thickness 0.025

Material 2024

Kit Wing

Assembly Aileron



Part # 130.513

Unit Price \$2.40

Description Stiffener, Aileron Skin (\$35 full set) (230.513)

Thickness 0.020

Material 2024

Kit Wing

Assembly Aileron



Part # 130.600

Unit Price \$13.50

Description Piano Hinge, Flap 53"

Thickness



Material

Kit Wing

Assembly Flap

Part # 130.601

Unit Price \$65.00

Description Flap Skins L & R (folded)

Thickness 0.020

Material 2024

Kit Wing

Assembly Flap

Part # 130.603

Unit Price \$13.00

Description Flap Spars L & R

Thickness 0.032



Material 2024

Kit Wing

Assembly Flap

Part # 130.604

Unit Price \$1.00

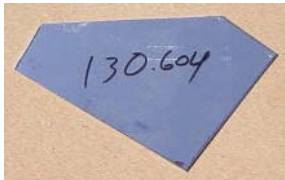
Description Flap Corner Gussets

Thickness 0.025

Material 2024

Kit Wing

Assembly Flap



Part # 130.605

Unit Price \$56.80

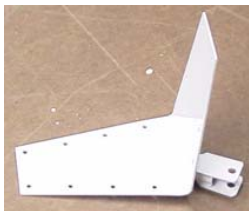
Description Flap Spar Control Fittings

Thickness 0.050

Material 4130

Kit Wing

Assembly Flap



Part # 130.606

Unit Price \$9.90

Description Outboard Flap Ribs L & R (230.504)

Thickness 0.025

Material 2024

Kit Wing

Assembly Flap



Part # 130.607

Unit Price \$9.90

Description Inboard Flap Ribs L & R

Thickness 0.025

Material 2024

Kit Wing

Assembly Flap



Part # 130.608

Unit Price \$12.00

Description Skin Stiffener Material

Thickness 0.025

Material 2024

Kit Wing

Assembly Flap

Part # 130.616

Unit Price \$13.70

Description Flap Hinge Reinforcements L & R

Thickness 0.032

Material 2024

Kit Wing

Assembly Flap



Part # 130.901

Unit Price \$112.50

Description Fiberglass Wing Tips - no light pad

Thickness

Material

Kit

Assembly

Part # 130.902

Unit Price \$112.50

Description Fiberglass Wing Tips - 2 position light pad

Thickness

Material

Kit

Assembly

Part # 130.903

Unit Price \$112.50

Description Fiberglass Wing Tips - 3 position light pad

Thickness

Material

Kit

Assembly

Part # 130.904

Unit Price \$125.00

Description Fiberglass Wing Tips - swept tip

Thickness

Material

Kit

Assembly

Part # 140.000

Unit Price \$5.00

Description Tailcone Hardware Kit

Thickness

Material

Kit Tailcone

Assembly

Part # 140.001

Unit Price \$372.00

Description Forward Fuselage Hardware Kit

Thickness

Material

Kit Fuselage

Assembly Fuselage

Part # 140.1001

Unit Price \$36.80

Description Trim Tab Cable 10ft

Thickness

Material

Kit Empennage

Assembly



Part # 140.301

Unit Price \$165.00

Description Firewall - engine turned finish

Thickness 0.018

Material s/s

Kit Fuselage

Assembly



Part # 140.302

Unit Price \$4.80

Description Firewall Attach Plates

Thickness 0.063

Material 2024

Kit Fuselage

Assembly



Part # 140.305

Unit Price \$5.00

Description Firewall Angle 1 x 1 x 0.125 @ 32" and 40"

Thickness 0.125

Material 6061

Kit Fuselage

Assembly

Part # 140.306

Unit Price \$15.60

Description Wing Rear Spar Carry-through 1 x 1 angle @ 24"

Thickness 0.125

Material 2024

Kit Tailcone

Assembly

Part # 140.307

Unit Price \$6.50

Description Wing Rear Spar Carry-through Doubler 1" x 24"

Thickness 0.063

Material 2024

Kit Tailcone

Assembly

Part # 140.309

Unit Price \$4.00

Description Filler Strips 1 x 0.063 @ 30" and 36" (or 2x .032)

Thickness 0.063

Material 2024

Kit Fuselage

Assembly

Part # 140.310

Unit Price \$14.00

Description Engine Mount Brackets

Thickness 0.063

Material 4130

Kit Fuselage

Assembly

Part # 140.320

Unit Price \$50.00

Description Instrument Panel

Thickness 0.040

Material 2024

Kit Fuselage

Assembly



Part # 140.330

Unit Price \$135.00

Description Bulkhead Station 99.35

Thickness 0.032

Material 2024

Kit Tailcone

Assembly



Part # 140.331

Unit Price \$95.00

Description Bulkhead Station 128.0

Thickness 0.032

Material 6061

Kit Tailcone

Assembly

Part # 140.332

Unit Price \$29.80

Description Bulkhead Station 160.0

Thickness 0.032

Material 2024

Kit Tailcone

Assembly



Part # 140.333

Unit Price \$26.40

Description Bulkhead Station 177.5

Thickness 0.032

Material 2024

Kit Tailcone

Assembly



Part # 140.334

Unit Price \$20.00

Description Bulkhead Station 182.0

Thickness 0.032

Material 2024

Kit Tailcone

Assembly



Part # 140.336

Unit Price \$30.00

Description Seat Support Bulkhead Station 83.75

Thickness 0.032

Material 2024

Kit Fuselage

Assembly



Part # 140.348

Unit Price \$20.40

Description Bulkhead Doublers Station 99.35

Thickness 0.125

Material 2024

Kit Tailcone

Assembly



Part # 140.349

Unit Price \$19.50

Description Tailwheel Bracket Station 177.5

Thickness

Material 4130

Kit Tailcone

Assembly



Part # 140.350

Unit Price \$4.50

Description Bulkhead Doubler Station 177.5

Thickness 0.063

Material 2024

Kit Tailcone

Assembly

Part # 140.351

Unit Price \$31.70

Description Tailwheel Bracket Station 182.0

Thickness

Material 4130

Kit Tailcone

Assembly



Part # 140.356

Unit Price \$22.00

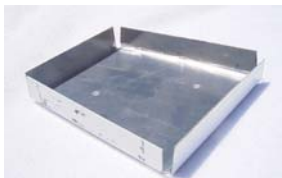
Description Transverse Bulkhead

Thickness 0.032

Material 2024

Kit Tailcone

Assembly



Part # 140.359

Unit Price \$9.80

Description Doubler, Transverse Tailcone Bulkhead

Thickness 0.032

Material 2024

Kit Tailcone

Assembly

Part # 140.369

Unit Price \$8.60

Description Fuselage Stringers 1 x 1 x 0.125 @ 59"

Thickness 0.125

Material 6061

Kit Fuselage

Assembly

Part # 140.370

Unit Price \$21.70

Description Forward Fuselage Stringers

Thickness 0.040

Material 2024

Kit Fuselage

Assembly



Part # 140.390

Unit Price \$140.00

Description Tailcone Side Skins (left side flanged)

Thickness 0.025

Material 2024

Kit Tailcone

Assembly

Part # 140.391

Unit Price \$245.00

Description Belly Skin (rolled)

Thickness 0.025

Material 2024

Kit Tailcone

Assembly



Part # 140.400

Unit Price \$7.50

Description Elevator Bellcrank Skin Support (3/4x3/4 angle @ 30

Thickness 0.063

Material 6061

Kit Fuselage

Assembly

Part # 140.402

Unit Price \$13.80

Description Rudder Cable Pully Brackets Station 99.35

Thickness 0.050

Material 4130

Kit Fuselage

Assembly



Part # 140.406

Unit Price \$9.60

Description Safety Belt Brackets 2.625 x 0.625 & Bushings

Thickness 0.095

Material 4130

Kit Fuselage

Assembly



Part # 140.407

Unit Price \$38.00

Description Fuselage Tunnel, 2 sides + tunnel

Thickness 0.040

Material 2024

Kit Fuselage

Assembly



Part # 140.450

Unit Price \$18.00

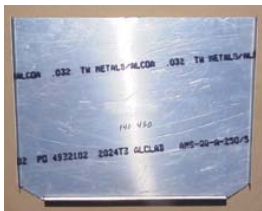
Description Seat Bottom

Thickness 0.032

Material 2024

Kit Fuselage

Assembly



Part # 140.451

Unit Price \$10.50

Description Seat Bottom Support R & L

Thickness 0.025

Material 2024

Kit Fuselage

Assembly



Part # 140.453

Unit Price \$24.80

Description Shoulder Harness Bracket (n/a M-IA)

Thickness 0.062

Material 4130

Kit Tailcone

Assembly



Part # 150.0000

Unit Price \$85.00

Description Empennage Hardware Kit

Thickness

Material

Kit Empennage

Assembly

Part # 150.0001

Unit Price \$2.40

Description Rudder Skin Stiffeners (\$13/full set)

Thickness 0.025

Material 2024

Kit Empennage

Assembly



Part # 150.0002

Unit Price \$2.40

Description Elevator Skin Stiffeners (\$23/full set)

Thickness 0.025

Material 2024

Kit Empennage

Assembly

Part # 150.004

Unit Price \$1.75

Description Elevator Stops (250.004)

Thickness 0.125

Material 2024

Kit Empennage

Assembly



Part # 150.210

Unit Price \$64.00

Description Elevator Control Arms

Thickness

Material 4130

Kit Empennage

Assembly Elevator

Part # 150.211

Unit Price \$58.00

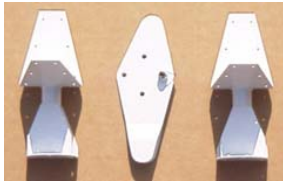
Description Elevator Control Horn

Thickness

Material 4130

Kit Empennage

Assembly



Part # 150.212

Unit Price \$78.00

Description Rudder Bottom Assembly

Thickness

Material 4130

Kit Empennage

Assembly Rudder



Part # 150.301

Unit Price \$12.00

Description Stabilizer Rear Spars

Thickness 0.032

Material 2024

Kit Empennage

Assembly Stabilizer



Part # 150.302

Unit Price \$14.30

Description Stabilizer Rear Spar Reinforcements (250.302)

Thickness 0.125

Material 2024

Kit Empennage

Assembly Stabilizer



Part # 150.303

Unit Price \$12.00

Description Stabilizer Front Spars

Thickness 0.032

Material 2024

Kit Empennage

Assembly



Part # 150.304

Unit Price \$20.50

Description Stabilizer Root Ribs (250.304)

Thickness 0.025

Material 2024

Kit Empennage

Assembly



Part # 150.305

Unit Price \$19.70

Description Stabilizer Tip Ribs (250.305)

Thickness 0.025

Material 2024

Kit Empennage

Assembly



Part # 150.306

Unit Price \$65.00

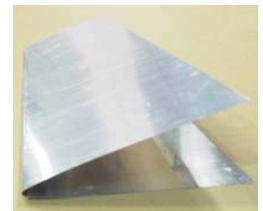
Description Stabilizer Skins

Thickness 0.032

Material 2024

Kit Empennage

Assembly



Part # 150.307

Unit Price \$19.80

Description Fin Leading Edge Bracket (250.307)

Thickness 0.062

Material 4130

Kit Empennage

Assembly



Part # 150.3071

Unit Price \$19.80

Description Stabilizer Leading Edge Brackets (250.307-1)

Thickness 0.062

Material 4130

Kit Empennage

Assembly



Part # 150.308

Unit Price \$14.50

Description Outboard Stabilizer Hinge Parts (250.308) (2pcs/set)

Thickness 0.062

Material 4130

Kit Empennage

Assembly Stabilizer



Part # 150.309

Unit Price \$19.00

Description Center Stabilizer Hinge (250.309)

Thickness 0.062

Material 4130

Kit Empennage

Assembly Stabilizer



Part # 150.315

Unit Price \$11.00

Description Elevator Spars

Thickness 0.032

Material 2024

Kit Empennage

Assembly Elevator



Part # 150.316

Unit Price \$48.00

Description Elevator Skins

Thickness 0.020

Material 2024

Kit Empennage

Assembly



Part # 150.317

Unit Price \$13.90

Description Elevator Root Rib (250.317)

Thickness 0.025

Material 2024

Kit Empennage

Assembly



Part # 150.318

Unit Price \$9.50

Description Elevator Root Rib, trim tab side (250.318)

Thickness 0.025

Material 2024

Kit Empennage

Assembly

Part # 150.319

Unit Price \$7.75

Description Trim Tab Auxillary Spar

Thickness 0.025

Material 2024

Kit Empennage

Assembly



Part # 150.320

Unit Price \$9.40

Description Elevator Tip Ribs (250.320)

Thickness 0.025

Material 2024

Kit Empennage

Assembly



Part # 150.321

Unit Price \$16.80

Description Outboard Elevator & Upper Rudder Hinges (rod end t

Thickness

Material

Kit Empennage

Assembly Elevator

Part # 150.3211

Unit Price \$27.40

Description outboard elev/rudder hinge OLD STYLE

Thickness

Material 4130

Kit

Assembly

Part # 150.323

Unit Price \$4.00

Description Elev. Cntrl Horn and Rud. Bottom Bushing

Thickness

Material 4130

Kit Empennage

Assembly

Part # 150.329

Unit Price \$4.50

Description Outboard Elevator/Rudder Hinge Brkt Doubler

Thickness 0.063

Material 2024

Kit Empennage

Assembly Elevator

Part # 150.330

Unit Price \$65.00

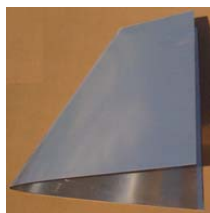
Description Fin Skin

Thickness 0.032

Material 2024

Kit Empennage

Assembly



Part # 150.331

Unit Price \$24.00

Description Fin Rear Spar

Thickness 0.032

Material 2024

Kit Empennage

Assembly Fin



Part # 150.332

Unit Price \$26.00

Description Fin Rear Spar Reinforcement

Thickness 0.125

Material 2024

Kit Empennage

Assembly Fin



Part # 150.333

Unit Price \$10.00

Description Fin Front Spar

Thickness 0.032

Material 2024

Kit Empennage

Assembly



Part # 150.334

Unit Price \$14.50

Description Fin Root Rib (250.334)

Thickness 0.024

Material 2024

Kit Empennage

Assembly



Part # 150.335

Unit Price \$12.60

Description Fin Tip Rib (250.305)

Thickness 0.024

Material 2024

Kit Empennage

Assembly



Part # 150.337

Unit Price \$5.00

Description Hinge Attach Doublers, Vert Fin & Horiz Stab

Thickness 0.032

Material 2024

Kit Empennage

Assembly Stabilizer



Part # 150.338

Unit Price \$14.50

Description Upper Fin Hinge Parts (250.308) (2pcs/set)

Thickness 0.062

Material 4130

Kit Empennage

Assembly Fin



Part # 150.339

Unit Price \$19.00

Description Lower Fin Hinge (250.309)

Thickness 0.062

Material 4130

Kit Empennage

Assembly Fin



Part # 150.340

Unit Price \$48.00

Description Rudder Skin

Thickness 0.020

Material 2024

Kit Empennage

Assembly



Part # 150.341

Unit Price \$10.50

Description Rudder Spar

Thickness 0.032

Material 2024

Kit Empennage

Assembly Rudder



Part # 150.342

Unit Price \$9.60

Description Rudder Bottom Rib

Thickness 0.025

Material 2024

Kit Empennage

Assembly



Part # 150.343

Unit Price \$9.40

Description Rudder Tip Rib (250.343)

Thickness 0.025

Material 2024

Kit Empennage

Assembly



Part # 150.348

Unit Price \$6.20

Description Rudder Stop

Thickness 0.090

Material 4130

Kit Empennage

Assembly



Part # 150.349

Unit Price \$19.40

Description Tailwheel Steering Bracket (250.349)

Thickness 0.062

Material 4130

Kit Empennage

Assembly



Part # 150.354

Unit Price \$4.60

Description Rudder Corner Reinforcement (250.354)

Thickness 0.040

Material 2024

Kit empennage

Assembly

Part # 150.355

Unit Price \$14.40

Description Fin Rear Spar Bottom Flange Doubler

Thickness 0.032

Material 2024

Kit Empennage

Assembly Fin



Part # 150.360

Unit Price \$4.00

Description Fin / Stab Tip Fastening Strip 1.125" x 27"

Thickness 0.032

Material 2024

Kit Empennage

Assembly



Part # 150.380

Unit Price \$37.00

Description Trim Tab Skin

Thickness 0.020

Material 2024

Kit Empennage

Assembly



Part # 150.381

Unit Price \$2.80

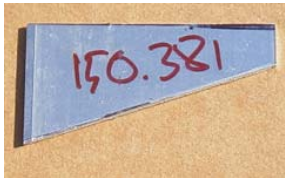
Description Trim Tab Arm

Thickness 0.062

Material 2024

Kit Empennage

Assembly



Part # 150.384

Unit Price \$4.60

Description Trim Tab Piano Hinge 13"

Thickness

Material

Kit Empennage

Assembly



Part # 160.1011

Unit Price \$105.00

Description Control Stick Support Assembly

Thickness

Material 4130

Kit Fuselage

Assembly Control Stic

Part # 160.1012

Unit Price \$32.50

Description Control Stick

Thickness

Material 4130

Kit Fuselage

Assembly Control Stic

Part # 160.1013

Unit Price \$24.60

Description Control Stick Assembly Pivot Mounting Brackets

Thickness

Material 4130

Kit Fuselage

Assembly Control Stic

Part # 160.1014

Unit Price \$24.00

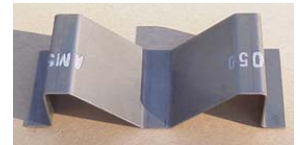
Description Control Stick Assembly Mount Brkt

Thickness 0.050

Material 4130

Kit Fuselage

Assembly Control Stic



Part # 160.1051

Unit Price \$25.00

Description Axle Shaft 0.75 x 0.049

Thickness

Material

Kit Fuselage

Assembly Rudder Ped

Part # 160.1052

Unit Price \$65.00

Description Rudder Pedal Arm Assemblies

Thickness

Material

Kit Fuselage

Assembly Rudder Ped

Part # 160.1053

Unit Price \$37.00

Description Rudder Pedals (2-3/4")

Thickness

Material

Kit Fuselage

Assembly Rudder Ped



Part # 160.1054

Unit Price \$4.75

Description Aluminum Axle Rods 0.25" OD 2@3.5" & 2@3.875'

Thickness

Material

Kit Fuselage

Assembly Rudder Ped

Part # 160.1055

Unit Price \$15.00

Description Rudder Pedal Bearing Blocks (pair)

Thickness

Material

Kit Fuselage

Assembly Rudder Ped

Part # 160.1056

Unit Price \$9.00

Description Aluminum Channel 1 x 1 (brake cylinder attach)

Thickness

Material

Kit Fuselage

Assembly Rudder Ped

Part # 160.111

Unit Price \$56.00

Description Flap Handle and Pivot Tube

Thickness

Material 4130

Kit Fuselage

Assembly Flap Control



Part # 160.113

Unit Price \$33.00

Description Flap Push Rods w/ 2 AN490HT8P

Thickness

Material 4130

Kit Fuselage

Assembly Flap Control



Part # 160.120

Unit Price \$84.00

Description Aileron Bellcrank Kit (M2 sides, spacers, bearings, bt)

Thickness

Material

Kit Wing

Assembly Aileron



Part # 160.121

Unit Price \$45.50

Description Elevator Bellcrank Kit (sides, spacers, bearings)

Thickness

Material

Kit Fuselage

Assembly

Part # 160.133

Unit Price \$43.00

Description Aileron Pushrods (stick to bellcrank) 0.625x.035x75 (

Thickness 0.035

Material 4130

Kit Wing

Assembly Aileron

Part # 160.404

Unit Price \$21.00

Description Flap Control Quadrant

Thickness 0.090

Material 4130

Kit Fuselage

Assembly Flap Contro



Part # 160.406

Unit Price \$22.60

Description Pivot Tube Mounting Brackets

Thickness

Material 4130

Kit Fuselage

Assembly Flap Contro

Part # 160.407

Unit Price \$27.70

Description Pivot Tube Actuating Arms

Thickness

Material 4130

Kit Fuselage

Assembly Flap Contro

Part # 160.408

Unit Price \$25.50

Description Flap Handle Actuator Tube & Spring

Thickness

Material

Kit Fuselage

Assembly Flap Contro



Part # 160.512

Unit Price \$47.00

Description Elevator Pushrod 1.5" x 0.49 tube @ 77"

Thickness 0.049

Material 6061

Kit Fuselage

Assembly

Part # 160.514

Unit Price \$26.80

Description Elevator Pushrod Inserts 1.5" (M2 260.514)

Thickness

Material 2024

Kit Fuselage

Assembly



Part # 160.521

Unit Price \$41.00

Description Elevator Pushrod (stick to belcrk) 5/8" ODX 32.437"

Thickness 0.035

Material 4130

Kit Fuselage

Assembly

Part # 160.528

Unit Price \$4.50

Description Aileron Pushrods (bellcrank to aileron) 1/2x.035x13 (

Thickness

Material 6061

Kit Wing

Assembly Aileron



Part # 160.530

Unit Price \$0.40

Description MS20470AD4-30 Rivets (for securing pushrod tube i

Thickness

Material

Kit Fuselage

Assembly

Part # 160.660

Unit Price \$40.50

Description Turnbuckles, Rudder Cable

Thickness

Material

Kit Fuselage

Assembly Rudder Ped



Part # 160.661

Unit Price \$33.00

Description Rudder Control Cables (260.661)

Thickness

Material

Kit Fuselage

Assembly Rudder Ped



Part # 160.662

Unit Price \$52.00

Description Turnbuckles, Fuel Tank Mount (long 8")

Thickness

Material

Kit Fuselage

Assembly Fuel Tank



Part # 170.1002

Unit Price \$310.00

Description 4" Tailwheel Assembly

Thickness

Material

Kit Tailcone

Assembly

Part # 170.300

Unit Price \$850.00

Description MI Gear Legs

Thickness

Material 7075

Kit Gear

Assembly

Part # 170.301

Unit Price \$24.50

Description Mounting Plate, Gear Leg

Thickness 0.190

Material 4130

Kit

Assembly Torque Tub



Part # 170.302

Unit Price \$10.80

Description Mounting Plate Bracket

Thickness 0.125

Material 4130

Kit

Assembly Torque Tub



Part # 170.303

Unit Price \$9.40

Description Mounting Plate Gusset

Thickness 0.125

Material 4130

Kit

Assembly Torque Tub



Part # 170.305

Unit Price \$17.60

Description Torque Tube 1.5"OD x 21.375"

Thickness 0.058

Material 4130

Kit

Assembly Torque Tub

Part # 170.306

Unit Price \$21.40

Description Torque Tube 1.375"OD x 33.25"

Thickness 0.058

Material 4130

Kit

Assembly

Part # 170.307

Unit Price \$38.50

Description Main Spar Gear Mounting Bracket

Thickness

Material 4130

Kit Wing

Assembly Torque Tub



Part # 170.308

Unit Price \$28.00

Description Gear Rear Spar Sockets

Thickness

Material 4130

Kit Gear

Assembly

Part # 170.310

Unit Price \$3.50

Description Bushings 1/2" OD x 0.437"

Thickness 0.065

Material 4130

Kit

Assembly Torque Tub



Part # 170.314

Unit Price \$4.80

Description Gear Bracket Spacers (under bolt head, revised 2015)

Thickness 0.190

Material 4130

Kit

Assembly Torque Tub

Part # 170.316

Unit Price \$21.75

Description Torque Tube 1.625"OD x 15.375"

Thickness 0.058

Material 4130

Kit

Assembly

Part # 170.350

Unit Price \$375.00

Description Torque Tube Assemblies (parts)

Thickness

Material 4130

Kit Gear

Assembly

Part # 170.375

Unit Price \$145.00

Description Tailwheel Spring

Thickness

Material 4130

Kit Tailcone

Assembly

Part # 170.378

Unit Price \$54.00

Description Tailwheel Spring Mount Tube Assembly

Thickness

Material 4130

Kit Tailcone

Assembly

Part # 180.304

Unit Price \$195.00

Description Fiberglass Seatback

Thickness

Material

Kit

Assembly



Part # 190.200

Unit Price \$485.00

Description canopy, standard flip over (canopy only)

Thickness

Material

Kit Canopy 1

Assembly

Part # 190.221

Unit Price \$34.00

Description canopy fairing material

Thickness .025

Material 2024

Kit Canopy 1

Assembly

Part # 190.222

Unit Price \$11.50

Description canopy frame tubing 3/8"OD, 28" long

Thickness 0.035

Material 4130

Kit Canopy 1

Assembly

Part # 190.223

Unit Price \$14.80

Description canopy frame tubing 3/8"OD, 38" long

Thickness 0.035

Material 4130

Kit Canopy 1

Assembly

Part # 190.224

Unit Price \$6.00

Description piano hinge 24"

Thickness

Material

Kit Canopy 1

Assembly

Part # 190.225

Unit Price \$4.70

Description canopy fairing material aft top 4"x24"

Thickness .025

Material 2024

Kit

Assembly

Part # 190.301

Unit Price \$8.00

Description Fuel Tank Mount Angle 1 x 1 x 0.125 @ 45°

Thickness 0.125

Material

Kit Fuselage

Assembly Fuel Tank

Part # 190.303

Unit Price \$6.60

Description Fuel Tank Splice Plates

Thickness 0.125

Material 2024

Kit Fuselage

Assembly Fuel Tank



Part # 190.304

Unit Price \$4.80

Description Fuel Tank Mounting Bracket

Thickness 0.063

Material 4130

Kit Fuselage

Assembly Fuel Tank

Part # 195.200

Unit Price \$590.00

Description canopy, M-IA slider (canopy only)

Thickness

Material

Kit Canopy 2

Assembly

Part # 195.201

Unit Price \$24.00

Description Lower Fairing

Thickness 0.032

Material

Kit Canopy 2

Assembly

Part # 195.202

Unit Price \$8.00

Description Canoly Seal Strip

Thickness 0.025

Material

Kit Canopy 2

Assembly

Part # 195.203

Unit Price \$14.00

Description Windshield Fairing

Thickness 0.025

Material

Kit Canopy 2

Assembly

Part # 195.204

Unit Price \$20.00

Description Track Mount Angle

Thickness 0.050



Material

Kit Canopy 2

Assembly

Part # 195.205

Unit Price \$10.20

Description Shoulder Harness Doubler

Thickness 0.125



Material

Kit Canopy 2

Assembly

Part # 195.206

Unit Price \$16.00

Description Transverse Bulkhead

Thickness 0.025

Material 2024

Kit Canopy 2

Assembly

Part # 195.301

Unit Price \$29.00

Description Steel Tube formed canopy bows 1/2"OD, 19" outside

Thickness 0.035

Material 4130

Kit Canopy 2

Assembly

Part # 195.302

Unit Price \$19.50

Description Steel Tube side rails 1/2"OD, 43" outside diameter

Thickness 0.035

Material 4130

Kit

Assembly

Part # 195.303

Unit Price \$19.50

Description Steel Tube 0.375"OD @ 4ft

Thickness 0.035

Material 4130

Kit Canopy 2

Assembly

Part # 195.304

Unit Price \$19.50

Description Steel Tube 1"OD @ 4ft

Thickness 0.035

Material 4130

Kit Canopy 2

Assembly

Part # 195.305

Unit Price \$7.00

Description Steel Sheet

Thickness 0.035

Material 4130

Kit Canopy 2

Assembly

Part # 195.401

Unit Price \$35.80

Description hardware kit M-LA

Thickness

Material

Kit Canopy 2

Assembly