

M-II C/S Jig & Wing Jig

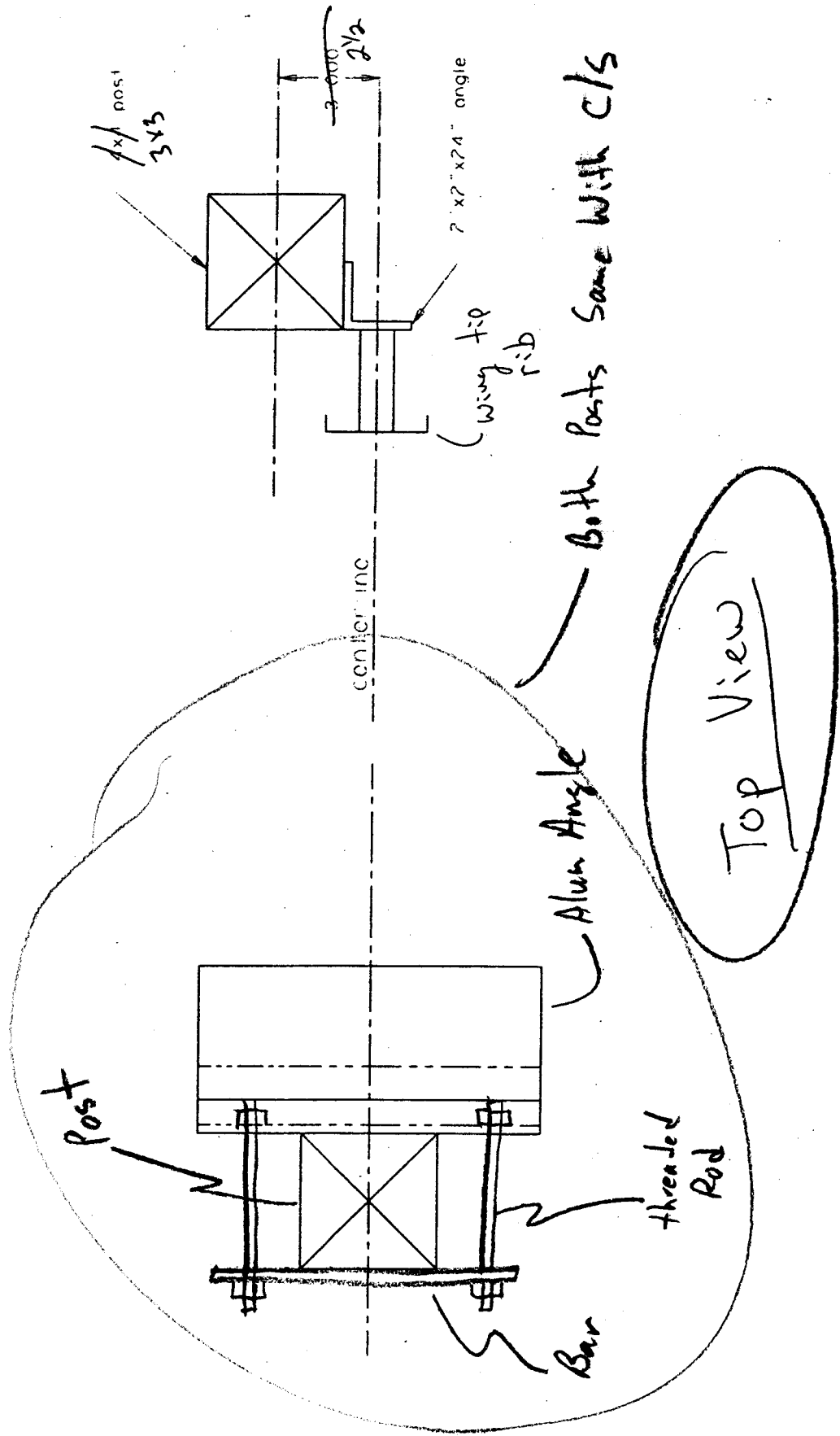
2 pcs	77"	3" square tube assembly, vertical posts
1 pcs	102.75"	3" x 3/16" bar, bottom cross brace
2 pcs	26"	2" x 2" x 3/16" angle, horizontal legs
1 pcs	107"	misc. angle/bar, top cross brace
2 pcs	10"	5" x 2" welded aluminum angle, main spar rest brkts (must be drilled for threaded rod to hold to post)
2 pcs	5"	5" x 2" welded aluminum angle, rear spar rest brkts (must be drilled for threaded rod to hold to post)
1 pcs	24"	2x2 aluminum angle, wing tip attach brkts (drill to post, tap post for attachment 2x5/16" –18 bolts)
2 pcs	3"	1" OD aluminum tube, wing tip spacers
4 pcs	6.25"	misc. angle/bar, backplate for threaded rod / angle (must be drilled for threaded rod to hold to post)

Hardware:

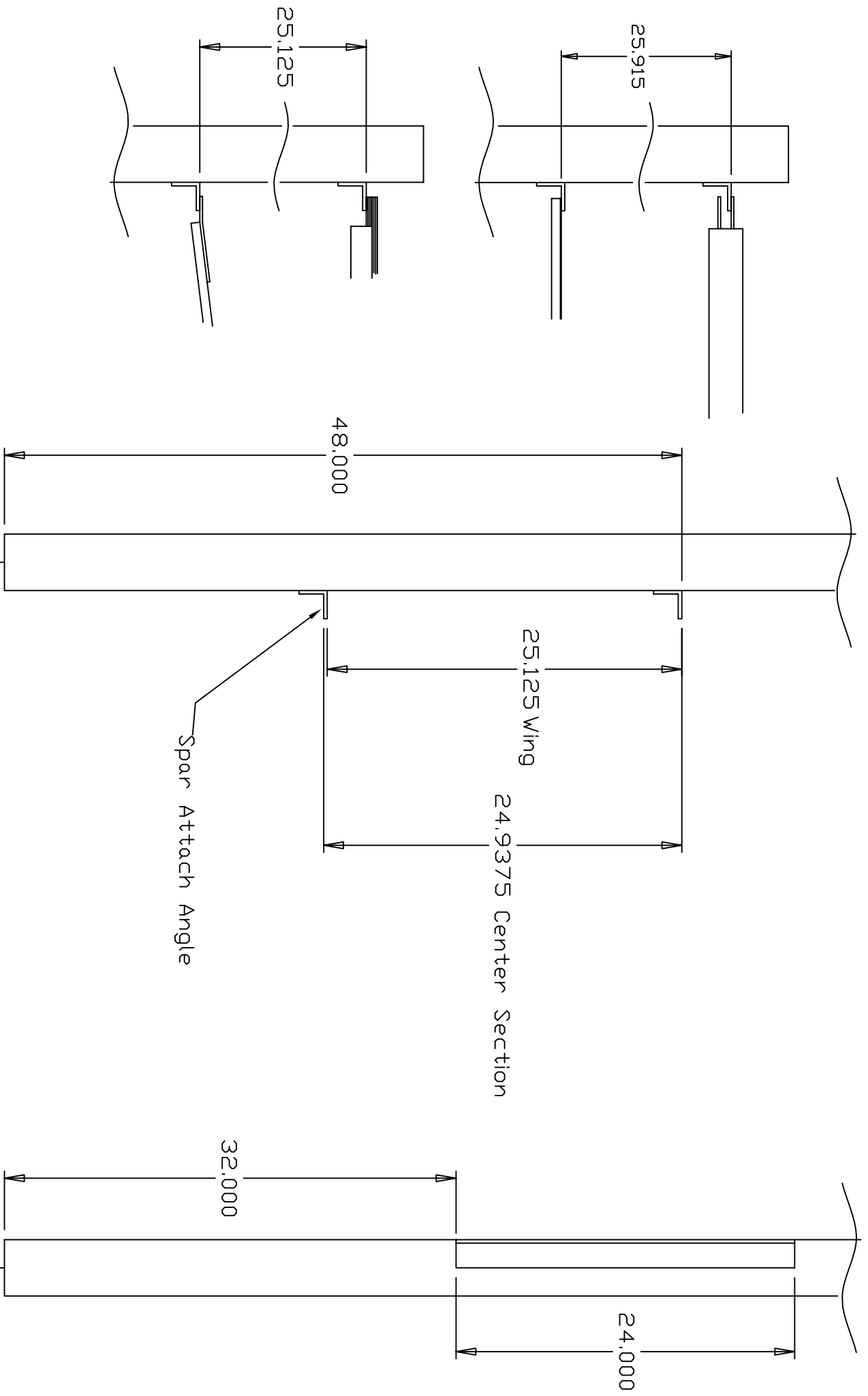
4 pcs	3/8"-16 threaded leveler pads
8 pcs	3/8"-16 x 4.5" thd rod, alum angles to posts
22 pcs	3/8-16 nuts
22 pcs	3/8" flat washer
6 pcs	3/8"-16 x 1.25" hex bolts, legs and bottom cross brace to posts
2 pcs	5/16" –18x.75" hex bolts, wing tip attach brkts to posts
2 pcs	5\16" flat washer
2 pcs	10-24x3.5" round head machine screws, wing tip to angle attachment
2 pcs	10-24 nuts
4 pcs	#10 flat washers

(use 2 clamps per side on the top cross brace to keep from racking)

Wing set up

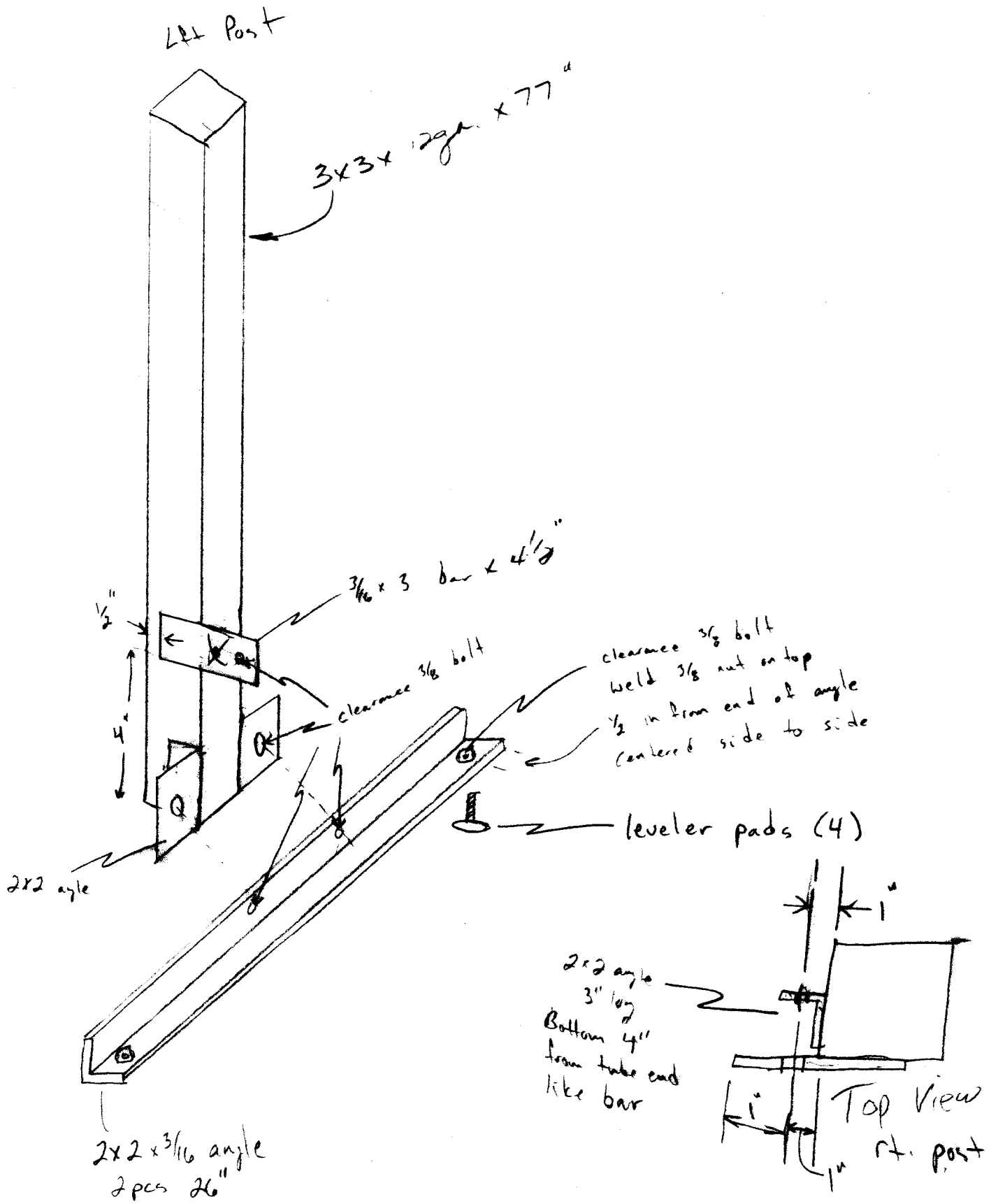


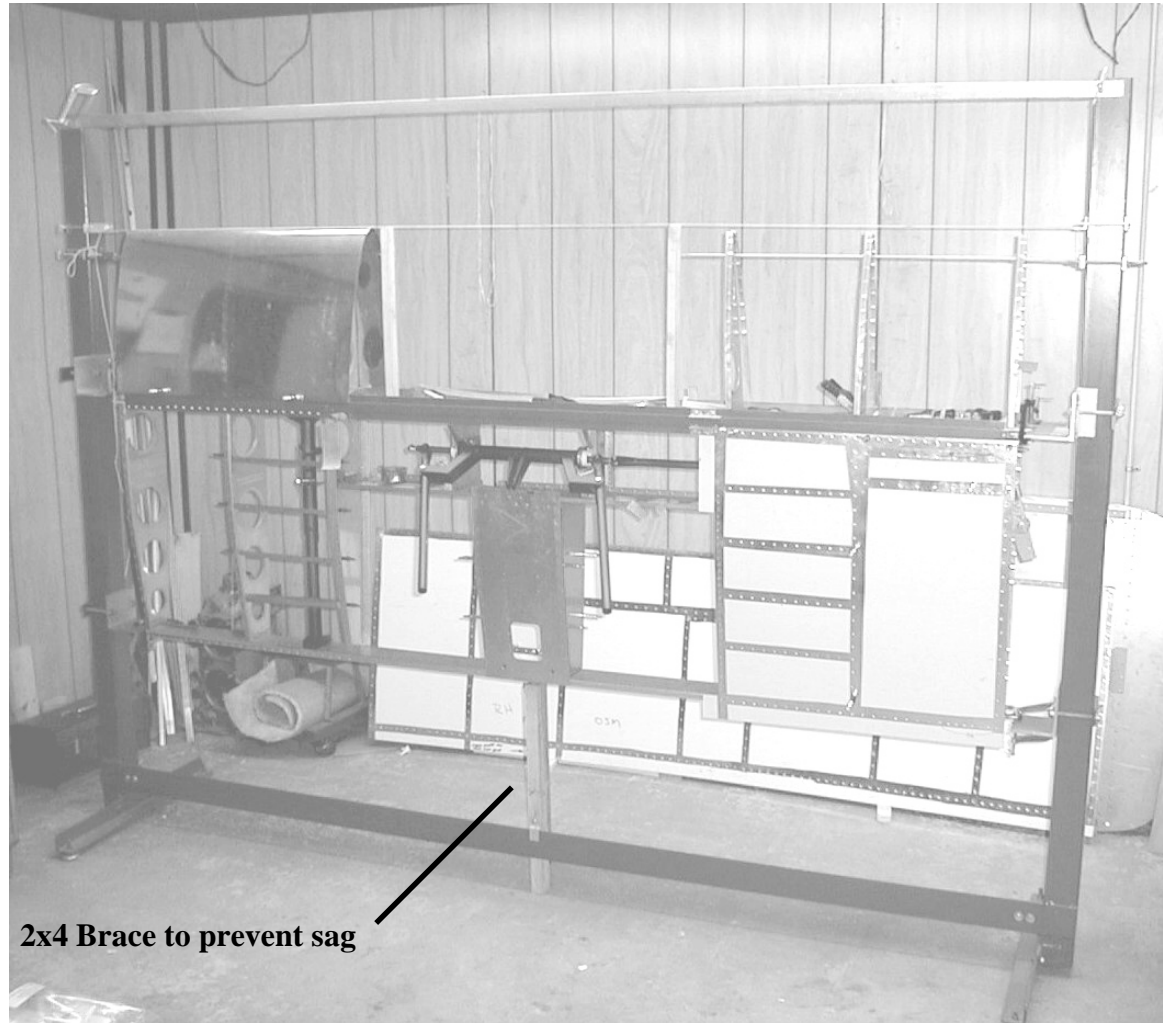
Both Posts Same With C/S



These values for 5" Spar Attach Angle
 They will change for different Spar Attach Angle widths

CENTER SECTION SET-UP





Mustang II Center Section in Jig



Clamp a diagonal brace to prevent the jig from racking



This spacer board is cut to 25 5/16" (hold) and goes between the forward face of the CS rear spar and the aft face of the CS main spar web. Use one at each end and in the center (three total)