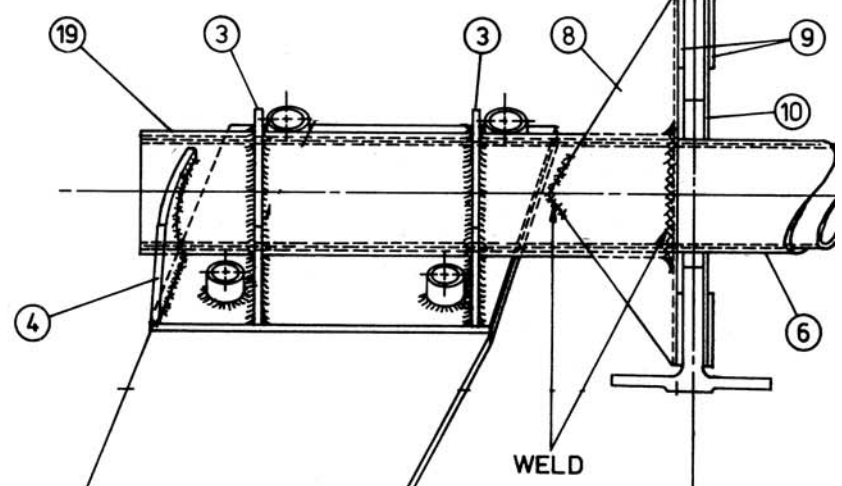


STA.  
73.75



①

**Hold This Dimension**

**+/- 0.5"**

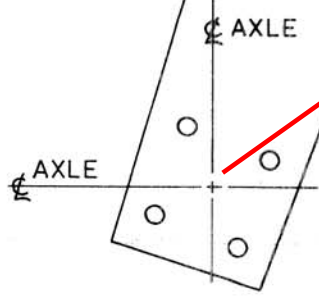
15.00

**Camber + 2° to 3° (Bottom In)**

**Toe In 0° to 2°**

**( Can swing leg forward / aft +/- 0.50" to adjust Toe In )**

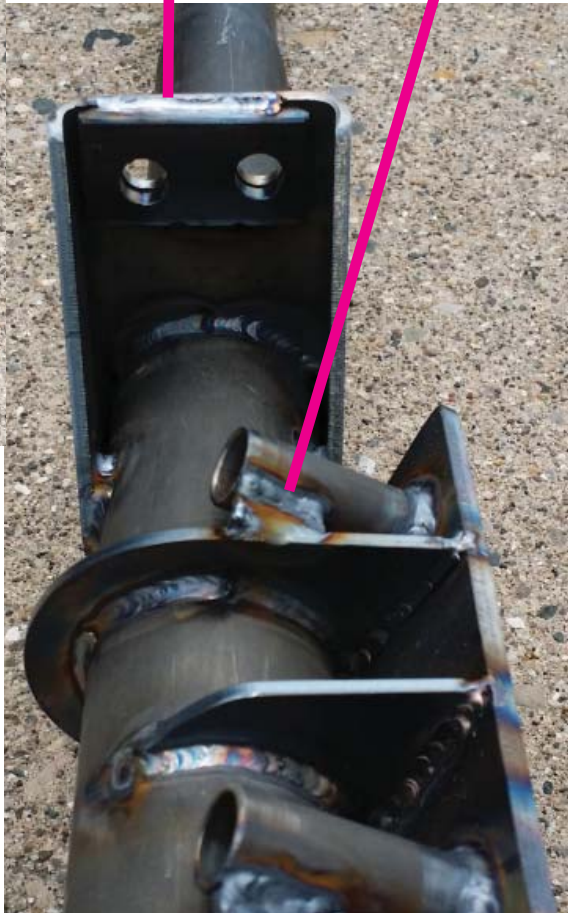
**Measure these with a digital level laid flat across leg at axle location with assembly in fixture, side of main spar bracket (#8) level.**





Weld Spacer to Spar Bracket

Weld Bushing to Gusset  
with Scrap Spacer



Landing Gear Mount Tube to be TIG  
Welded and then Stress Relieved to a  
Maximum of 1100 degrees F

Weld Down Tube Inside Bracket 0.625"  
This is the CRITICAL Weld

Spacer Predrilled with 25/64"  
( Oversize ) Holes and Edges  
Ground to Fit Radius

