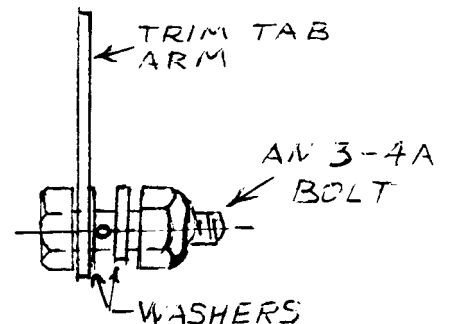


ELEVATOR TRIM TAB CONTROL WIRE ATTACHMENT

The .062 dia. hole drilled in the AN3-4A bolt for attaching the trim control wire is to be located .125" from the bolt head. The trim tab control arm is located between the bolt head and the wire. The control arm must be free to swivel without binding. A AN960-311 or 316L washer may be used to reduce excessive play of the arm. A AN960-316 washer and AN365-1032 nut are used to complete the installation. The nut is drawn tight to secure the control wire.



DRAWING REVISIONS JULY 1989