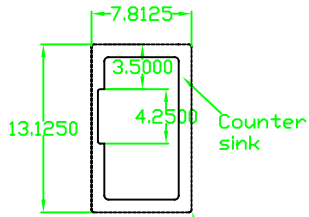


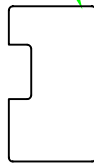
Requires 18 MS24693-C27 screws and MS21047-L06 nut plates for each access hole cover attachment



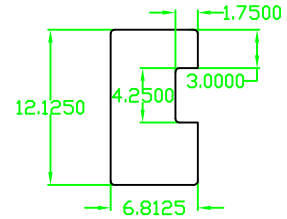
Strips of 0.032
Rivet strips to skin
and use nut plates
for cover attachment

Or use one piece doubler
provided by Mustang Aero.
Rivet holes and screw holes
pre drilled to match

Dimple for #6 screw

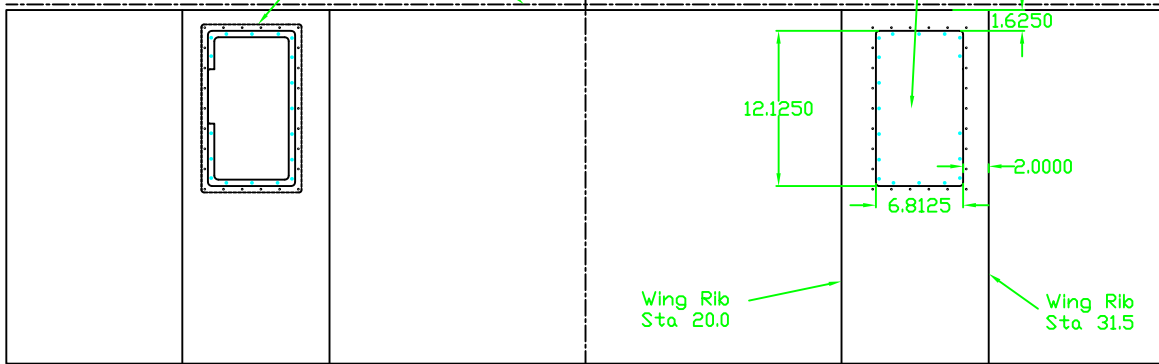


Access hole
cover

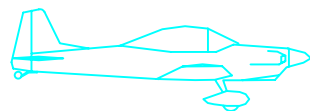


Cut holes with hand shears and file or with a
router and profile board as a guide

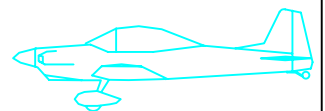
CL main wing spar



220.343 Bottom Main Skin



Mustang II
Mustang Aeronautics



Title: Tri Gear Main Belly Skin

Scale: 15:1

Approved By:

Drawn By: DSS

Date: 06/20/03

Mat'l: 2024-T3

Revised: 12/21/11

Drawing Number:

220.081